



2020-21

ANNUAL REPORT

Reena supported individuals visiting their new home



Ryan, a Reena supported individual enjoying a sunny fall day while on an outing



MISSION

Reena is a non-profit organization that promotes dignity, individuality, independence, personal growth, and community inclusion for people with diverse abilities within a framework of Jewish culture and values.

VALUES

Reena's values are based on Judaic principles. They govern all decisions made and encompass interactions with all of our stakeholders.

Our values are CLEAR: **CARE**

Chesed VeTzedek
Compassion and Justice

LEADERSHIP

Tikun Olam
Repair the World

EMPOWERMENT

V'ahavta L'reacha Kamocha
Value Others as You Value Yourself

ACCESSIBILITY

Lifnei Iver Lo Teeten Michshol
Remove Barriers

RESPECT

Kvod Habriyot
Honour Our Humanity

A SPECIAL MESSAGE FROM A GRATEFUL MOTHER

Four years ago, when I first met Reena CEO, Bryan Keshen, he pulled out a map. I remember glancing at the many dots painted across it. Bryan explained that some of the dots identified existing Reena homes, but some of the dots were future homes Reena hoped to build.

My mouth dropped open. Montreal, my hometown, did not have a new group home built since the late '90s. Government funding was scarce, and there were many obstacles involved when building specialized housing for people with developmental disabilities. I knew I had to be part of Reena. I had to do right by my son, Jacob, and the many other people living with developmental disabilities.

Four short years later, my son will soon become a resident of the Lou Fruitman Reena Residence. This residence will provide housing to over 138 adults and seniors with diverse needs, including those with developmental disabilities, mental health challenges and physical disabilities.

As a mother, my greatest wish for my children is for them to be happy. I know that by moving into the Lou Fruitman Reena Residence, my son is one step closer to finding such happiness. I am excited that with Reena's help, Jacob will carve his own path. He will have his own apartment, a roommate, neighbours, a social life and a community of his own.

One important aspect of Reena is its grounding in Jewish faith. When Jacob was 18, he went on a Taglit-Birthright trip to Israel. My son loves everything Jewish, especially the Jewish holidays. The location of the Lou Fruitman Reena Residence will provide many opportunities for Jacob to be close to his faith.

Jacob will be in a safe and nurturing environment that will give him an opportunity to reach his full potential.

Over the past four years, Reena has become incredibly important to my family. They have extended love, compassion and understanding. So much so, that I have recently joined the Reena Foundation Board of Directors.

Above all, Reena has given me peace of mind. As a mother, you cannot put a price tag on something like that.

With much gratitude,
Esther Mamane-Tencer



Esther Mamane-Tencer and her son, Jacob

EXECUTIVE MESSAGE

Our Leadership Role

As another year comes to a close, we look back on a year that was unlike any other and remember the losses we experienced, both in lives and in lifestyle.

We have had to make many difficult choices and act in ways we had never imagined. Fortunately, Reena has a history, culture and reputation of facing difficulties head on, forging new paths, and sharing our experiences with others.

We believe in doing work that positively benefits not only our organization and the individuals we serve, but also the community at large and the broader sectors we work in.

In the last year, our volunteers, management council and staff team developed solutions and services to address the challenges created by COVID-19. Reena led the sector as an Infection Prevention and Control (IPAC) champion for the regional vaccine programs, designed and developed new services and helped lead province-wide efforts on all these initiatives and more.

Reena had advisory roles with York Region and Toronto Public Health, participated in drafting the Toronto vaccine accessibility plan, co-chaired the developmental services vaccine working group, facilitated vaccine clinics, provided regional training, and actively engaged and supported families.

Our direct support staff, supervisors and managers were available 24/7, responding to and supporting individuals as outbreaks, closures and new public health and Ministry of Children, Community and Social Services (MCCSS) guidelines were announced.

In the last year, Reena has moved forward on many areas of strategic importance:



Taking a lead position in the developmental services linkage to an improved health services strategy with the expansion of dual diagnosis mental health supports



Expanding our housing opportunities by completing the Lou Fruitman Reena Residence, expanding space in Chai Tikvah, beginning the development process at Elm Ridge and acquiring land for a new home in Thornhill



Explored and launched new enterprises like GReena (Reena's green food supply initiative), ongoing online programs and new employment strategies

During the last year, our Foundation fostered new relationships and strengthened existing donor relations, providing increased support during a challenging time. Our housing corporation, Batay Reena, secured and supported the existing infrastructure, helped expand housing opportunities and shared resources with the entire sector.



L-R: Viji Hariharan, Bryan Keshen, Sandy Stemp, Sheila Lampert, August 2019

We will continue to look for partnerships and lead when called upon.

In the year ahead, we will focus on continued growth aligned with our strategic plan. We will pay special attention to improving all aspects of service to **meet emerging needs in the sector**, while continuing to enhance awareness and advocate for individuals with diverse abilities.

Sincerely,

Bryan Keshen
[REENA, CEO](#)

Sheila Lampert
[REENA FOUNDATION, ED](#)

Sandy Stemp
[REENA, COO](#)

Viji Hariharan
[REENA, CFO](#)

BOARD MESSAGE



L-R: Charles Chee, Steven Justein, Harold Seidel

Building a Stronger Reena Together

As Chairs of Reena, Batay Reena and Reena Foundation, we commend the entire staff team for implementing and fulfilling Reena's mission every single day. We also want to thank our fellow board members and committee volunteers who continued to be active and engaged during a very difficult time.

A healthy and sustainable organization has effective leadership, financial stability, and efficient systems and processes. As Reena continues to evolve with a focus on new needs and changing support requirements, we have worked together closely to maximize the value of each of our organizations' strengths, creating an effective and aligned team.

Over the last two years, we have thoroughly reviewed our governance structure and have incorporated major policy and process improvements, including ongoing risk review, updated investment policies, board evaluation tools and an ongoing recruitment process. We recognize the importance of evaluating our internal systems, processes and operational frameworks, to ensure we have the proper structures in place to sustain continued growth.

Our goals are for Reena to continue to build on its strengths, leverage opportunities and prepare for future challenges that may arise. We will focus on maintaining our core values as we grow, managing change effectively, while remaining accountable to our stakeholders. By investing in our people, our systems and our relationships, we can continue to build on Reena's legacy of success.

We are grateful that in the midst of a pandemic we were able to build the Lou Fruitman Reena Residence, which will provide housing for 138 people. We expanded our mental health services, and implemented and maintained standard setting protocols for infection controls.

Across all levels of government, we played the role of active advisor and advocate, and helped lead vaccination efforts for Ontarians in supportive housing and those with disabilities, both within and outside the Reena family. Much of our work was conducted virtually including events, fundraisers and meetings. Despite physical distancing, we grew closer.

In the coming years we will face new challenges as we focus on meeting the growing gap in services. We aspire to continue to build on the tradition and culture of our founders with bold innovation and collaborative efforts.

We thank the individuals and families who entrust us with this sacred mission. We look forward to the days ahead when we can once again gather and celebrate with joy – the English translation of Reena.

Sincerely,

Charles Chee
REENA

Steven Justein
REENA FOUNDATION

Harold Seidel
BATAY REENA



L-R: Robin Martin, Parliamentary Assistant to the Minister of Health and MPP Eglinton-Lawrence; Charles Chee, Board Chair, Reena; Madeleine Bodenstein, Board Member, Reena Foundation; The Honourable Stephen Lecce, Minister of Education and MPP King – Vaughan; The Honourable Steve Clark, Minister of Municipal Affairs and Housing and MPP Leeds – Grenville – Thousand Islands and Rideau Lakes; Dr. Faisel Saeed, Board Member, Reena; Sheila Lampert, Executive Director, Reena Foundation

Ribbon-cutting Marks Culmination of a Dream

On July 7, 2021, a major milestone in the lives of individuals with disabilities and their families was realized, as Reena celebrated the ribbon-cutting of its newest housing project, the Lou Fruitman Reena Residence. This is the largest residential project in Reena's almost 50-year history.



L-R: Representing the Fruitman family, Lisa Fruitman; The Honourable Doug Ford, Premier of Ontario; The Honourable Deb Schulte, Federal Minister for Seniors and MP for King – Vaughan; Harold Seidel, Board Chair, Batay Reena; Bryan Keshen, CEO, Reena; The Honourable Dr. Merrilee Fullerton, Minister for Children, Community and Social Services and MPP for Kanata – Carleton; Alan Shefman, Vaughan Local Councillor; Steven Justein, Board Chair, Reena Foundation; Gila Martow, MPP for Thornhill

A dream until recently, the Lou Fruitman Reena Residence celebrated its groundbreaking less than two years ago, and despite all kinds of unforeseeable challenges including, of course, a global pandemic, that dream is now a reality; a reality that is quickly transforming the lives of so many.

The joy, energy and pride that surrounded the ribbon-cutting ceremony was shared by countless community members online, as well as an impressive roster of dignitaries including: Premier Doug Ford; Minister Deb Schulte; Minister Merrilee Fullerton; Minister Steve Clark; Minister Stephen Lecce; MPP

Robin Martin; local MPP for Thornhill Gila Martow; and Vaughan Local Councillor Alan Shefman, who were all on hand to bring remarks. In addition, Vaughan Mayor and Reena Community Capital Campaign Co-Chair Maurizio Bevilacqua, and Chair and CEO of the Azrieli Foundation, Dr. Naomi Azrieli, addressed the importance of the day virtually.

Housing remains one of the most challenging issues facing individuals with disabilities. To have the Lou Fruitman Reena Residence – built in response to the needs of some 12,000 individuals with

Continued on page 12 >

LOU FRUITMAN REENA RESIDENCE

Continued from page 11

developmental disabilities who are waiting for housing in Ontario – serve as the beacon of a housing model that provides independence, affordability and accessibility, with 24/7 resources, is invaluable.

“While we at Reena are not builders, we build because families and individuals ask and need housing,” said Bryan Keshen, Reena’s CEO.

Modelled on the success of the Reena Community Residence – one of the leading examples of integrated housing and support services for adults with disabilities – the Lou Fruitman Reena Residence will be home to 138 individuals with developmental, physical and/or mental health needs. It has 79 units ranging from bachelor to four- bedroom. It includes specialized units for complex healthcare needs, units designed for independent or shared living arrangements, eight essential respite spaces, and the Azrieli Hub, which houses innovative programming and amenities areas.

Of course, a project this ambitious requires the most committed leadership imaginable, which is precisely where Lou Fruitman ^{z”l} comes in. A humble man who avoided the spotlight, Lou generously supported Reena since its inception, along with the late Rabbi Joseph Kelman and other generous community members. Lou helped Reena become what it is today despite not having a family member in need of its services.

Lou’s wife Betsy committed \$5.4 million, the largest gift in Reena’s history, to help create this magnificent new facility in honour of Lou. Unfortunately, Betsy passed away in January 2021.

“Lou used to say, ‘But for the grace of G-d go I...,’” said Betsy Fruitman at the Reena Exceptional Abilities Gala in 2018.

“My husband never wanted to be in the spotlight; it wasn’t about him, and he wanted all of the attention on the incredible work that Reena did, and continues to do today. But I know he would be so proud about his family’s \$5.4 million gift.

He personified community leadership and *tzedakah* perhaps better than anyone else, and I am so proud that we are able to continue his legacy.”

“It was, in the end, Betsy’s vision that allowed Reena to break ground,” says Sheila Lampert, Executive Director, Reena Foundation. “While honouring Lou’s memory with this incredibly generous gift, Betsy left a legacy in her own right. In fact, Betsy’s efforts and generosity will forever be a piece of the building through the ‘Betsy Fruitman Garden’ that adorns the facility. It’s appropriate for a garden to be named after Betsy since she is the one who planted the seeds that, like this facility, will continue to grow and transform lives.”

Being part of the community and living as independently as possible are among the most important values and goals shared by people with disabilities, their families and advocates. A home of one’s own is the cornerstone of independence for people with disabilities and that is precisely what the new Lou Fruitman Reena Residence will deliver.

Reena’s leadership knows all too well that it cannot afford to take a break from its mandate. They realize that the need for affordable, accessible housing for people with disabilities far exceeds the supply.

Continued on page 14 >



"I want to commend Reena for their vision on this project and I want to thank the advocacy of Reena and the work they've done. Our National Housing Strategy's goal of creating 2,500 new affordable homes for people with disabilities is very close to reality."

Minister Deb Schulte



"I know with Reena, every single penny goes a million miles. This is not their last building I'm sure, and I can tell you our government, Government of Ontario will always stand behind you."

Premier Doug Ford



"When government, foundations, corporations and individuals work well together, great things happen. I am honoured that the Azrieli Foundation is part of this transformative project."

Dr. Naomi Azrieli

LOU FRUITMAN REENA RESIDENCE

Continued from page 12

While in the preliminary stages of its next housing project in Toronto, Reena will be rebuilding on the site of two group homes currently operating on Elm Ridge Drive. The plan is for about 100 self-contained apartment units to house about 150 individuals, together with underground parking, programming and administrative spaces.

Similar to the Reena Community Residence and the Lou Fruitman Reena Residence, the Elm Ridge Residence will be based on the principles of intentional communities:

- Person-centred approach
- Safe and welcoming environment
- Inclusion and diversity
- Strong and respectful collaboration
- Living and sharing life together



"While we at Reena are not builders, we build because families and individuals ask for and need housing."

Bryan Keshen
CEO Reena



"I also want to take a moment to recognize all the incredible people working in the developmental services sector here at Reena and across the province. Your compassion and dedication are inspiring, and the work that you do makes such a difference in your communities and in the lives of people across the province."

Minister Merrilee Fullerton



"What you've managed to build here is an incredible testament to the dedication, commitment and leadership of everyone involved."

Minister Steve Clark



Builder's concept of a three-bedroom unit at the Lou Fruitman Reena Residence



Builder's concept of a one-bedroom unit

LOU FRUITMAN REENA RESIDENCE



"What they do is life saving. We can't ever forget how important it is to families that might be struggling, might be very concerned about their children, their young adults going off into the world – but they always have Reena."

Councillor Alan Shefman



"As Co-Chair of the Lou Fruitman Reena Residence Capital Campaign, today's milestone brings me a great deal of joy. I am grateful for the important role this residence will play in supporting the diverse needs of our citizens."

Mayor Maurizio Bevilacqua



"I thank my Co-Chair Mayor Bevilacqua for the time and energy he devoted to this project. Thank you to the generous donors and all levels of government that have helped to make this day come true."

Robert Berger
Executive Member
Reena Foundation Board



Track at the Wellness Centre in The Azrieli Hub



Amico GoLift will allow people with physical disabilities to walk the track



The Betsy Fruitman Garden



L-R: Marla (Fruitman) Struminger, Sheila Lampert, Betsy Fruitman ^zl and Lisa Fruitman at Reena's 2018 Exceptional Abilities Gala

"Betsy helped us plant seeds to bring this building to life. We created this garden and all that will bloom in its future in her memory."

Sheila Lampert
Executive Director
Reena Foundation

For information on naming opportunities, please contact Sheila Lampert:
slampert@reenafoundation.org

For updates regarding the Elmridge project, please visit:
www.reena.org/elmridge

HOUSING

Government Relations

Advocating for Affordable and Supportive Housing

One of the roles of Reena's Government Relations team is to advocate on behalf of individuals with developmental disabilities and mental health issues. Those lobbying efforts lead to a specific earmark of new affordable housing units within Canada's National Housing Strategy: 2,400 of 300,000 (4%) of new housing units, which were specifically targeted to the group we advocated for.

Reena was the first to use the Canada Mortgage and Housing Corporation (CMHC) Co-Investment Fund as part of the financial underpinning of the affordable and inclusive Lou Fruitman Reena Residence (LFRR), our second Intentional Community and biggest residence to date.

During the summer of 2021, many residents began moving into the new LFRR. One of the new residents, who moved in with three of her roommates, is Susan; a Reena individual who lived in an independent living capacity, supported by Reena staff.

Susan, who worked in the community for many years, is excited about her move to the LFRR, due to the innovative programs and the variety of support available. "I am so happy that I'm here now," says Susan. "It is the happiest occasion in the entire world. I find it beautiful here. This place is more suitable for me, and I get a lot of help. I needed a lot of help, and I am proud of myself, of how far I have come."

Although there are still COVID-19 health restrictions in place, Susan is looking forward to maintaining her active lifestyle, community involvement and close relationships with her roommates.

Reena is also very grateful for the collaborative efforts from the City of Vaughan to change the designation of the land on which LFRR stands from "Agricultural" to "Assisted Living Facility". We are also lobbying for more explicit definitions for "Assisted Living", "Group Homes", "Congregate Care" and "Respite Care".

The insistence on clarifying these definitions is not only integral for Reena's goals of maintaining the maximum respite unit offerings to our families, but also helpful to other developmental services agencies who wish to acquire, renovate and operate additional buildings in residential areas, thus increasing living options for the individuals we support.

Pre-pandemic, Reena hosted tours of the Reena Community Residence for Municipal, Regional, Provincial and Federal officials to clarify our point of view on affordable housing. We also participated in face-to-face workshops on affordable housing with the cities of Toronto and Markham. During the pandemic we have moved to virtual workshops, summits and targeted meetings with politicians, staff and consultants in Vaughan, Richmond Hill, Markham, York Region and Toronto and at the Provincial level.

If you are interested in supporting Reena and ensuring that affordable and supportive housing needs for individuals are met, please contact the Government Relations team: info@reena.org.

Innovative Technology

Enabling Social, Meaningful Engagements

Like many organizations during the last year, Reena had to utilize its resources to support the goals of our strategic plan, especially when it involved using advanced technological tools to support the individuals we care for.

For example, take Dave, who lives in one of Reena's independent living apartments. Due to pandemic restrictions, many of Dave's favourite activities and necessary medical appointments had to either be cancelled or changed; not to mention his regular pre-pandemic meetings with peers at Reena Community Participation programs.

Thanks to Reena's technology-enhanced engagement for adults living independently, these individuals are now enjoying robust communication and community participation opportunities due to the purchase of iPads and supportive technology infrastructure. The funds to kick-start Reena's technology campaign were provided by grants from Joel's Ongoing Inclusion Network, the McConnell Foundation, the Government of Canada's Emergency Community Support Fund and Community Foundations of Canada.

Individuals like Dave can now see their friends, albeit virtually, attend medical appointments, have scheduled virtual family meetings and much more – all with the close support of Reena staff.

Many of the group homes that Reena operates also received much-needed upgrades to the computerized infrastructure, including new desktops, Wi-Fi networks and cabling, and much more.



Reena's IT Department has recently deployed innovative training modules for our staff, educating them on how to identify possible cyber attacks. These types of attacks could potentially pose a risk to Reena's daily operations, not to mention the risk of private health information being leaked. We are happy to report that, due to the education modules, we have managed to reduce the potential risk by 50 percent.

For ongoing, diversified projects that involve information technology to support our individuals, some are implemented internally at Reena, but most are done in close collaboration with industry leaders and international organizations, streamlining our core services and protecting health information.

Reena will continue to allocate resources and prioritize initiatives by which our individuals will benefit, emotionally and socially, from using technological tools.

HEALTH SERVICES

If Not Now, When? If Not Us, Who?

A Bridge to Better Healthcare Outcomes

While years have passed and history cannot be forgotten, it is important to reflect on the fact that those with developmental disabilities were once part of our healthcare system. In some ways, we have come a long way from institutions delivering care. In other ways, there remains a disjointed bridge between developmental services and quality healthcare delivery. Reena's goal is to build the much-needed bridge to improve healthcare outcomes for those with developmental disabilities.

We know that the gaps in our healthcare system and the impact to those with developmental disabilities predate the arrival of a global pandemic.

A 2019 study from the Centre for Addiction and Mental Health highlighted that people with developmental disabilities fare worse

in the healthcare system than those without developmental disabilities.

At a time when Ontario healthcare is undergoing a major transformation, Reena believes it is essential that we talk about how we can better improve health outcomes. The problems will not go away if we do not come together to design solutions, and these solutions need to be embedded into our broader healthcare strategies.

How Reena Makes a Difference

The Ontario government has introduced a new model of care to enable patients, families, communities and providers to work together, innovate and build on what is best in our healthcare system – Ontario Health Teams (OHTs). These teams are a group of providers that work together to

Healthcare outcomes for people with developmental disabilities*



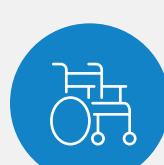
Nearly 2x higher
30-day repeat emergency department visits
(34.5% vs. 19.6%)



6.5x higher
Alternate level of care (remaining in a hospital despite recovered enough for discharge) (4.6% vs. 0.7%)



More than 3x higher
30-day repeat hospitalization
(7.4% vs. 2.3%)



17.5x higher
Likelihood of living in long-term care facility
(3.5% vs. 0.2%)

**Source: Elizabeth Lin et al, Feb 2019, Addressing Gaps in the Health Care Services Used by Adults with Developmental Disabilities in Ontario*



Reena staff volunteers at a vaccination clinic for individuals with developmental disabilities

deliver coordinated care for people, even if they are not in the same organization or physical location. It is a new way of organizing and delivering care that is more connected to those in their communities.

Reena is participating as a primary member of the Western York Region OHT and as its co-chair. We are also a secondary member of the North York OHT. In Western York Region, our priority populations are medically and socially complex frail older adults as well as mental health and addiction. Through working groups made up of members and staff from our OHT, we are working to deliver on the important tasks assigned to us by the government. These groups will focus on primary care, digital health, patient engagement, integrated care and communications.

Western York Region Ontario Health Team Members

- Reena
- Vaughan Community Health Centre
- Woodbridge Medical Centre Family Health Team
- MacKenzie Health
- Hospice Vaughan
- York Region
- SE Health
- March of Dimes Canada
- York Support Services Network
- Community and Home Assistance to Seniors (CHATS)
- Universal Care
- CBI Health Care
- CareFirst Seniors and Community Services
- Hill House Hospice
- Alzheimer Society of York Region

COVID-19 Pandemic – Reena Responds

The COVID-19 pandemic has affected us all. We saw cases spike and decline through various waves that were marked with hospitalization and death.

Provincial Network, York Region and Vaccine Distribution

Reena and other agencies did not stop supporting people with developmental disabilities during the COVID-19 pandemic. We continued to respond to outbreaks in congregate settings among residents and staff. Reena took on a leadership role with the Provincial Network to ensure that the sector received essential educational and operational information to prepare for COVID-19 vaccine distribution.

Reena also stepped up to coordinate and deliver immunizations to supported individuals and staff. Our role with the Provincial Network and at the York Region planning table saw agencies better informed in matters related to vaccine distribution, prioritization, human resources, education and advocacy. Our effort worked to ensure developmental services sectors were well prepared to respond.

Infection Prevention and Control (IPAC)

The Ministry of Children, Community and Social Services believed strongly in Reena's abilities to support others. In late 2020, the Ministry announced its intention to develop and implement a model of Infection Prevention and Control (IPAC) to support congregate care settings.

The Ministry chose Reena as an IPAC Champion to complement the work being done by MacKenzie Health and North York General Hospital. Reena worked to be a conduit of IPAC information-sharing between the hospitals and residential service providers to limit the spread of COVID-19 and outbreaks.

As we continue to learn more about the negative effects of COVID-19 on those with developmental disabilities, Reena will work with our friends in the developmental services sector, government and health partners to prevent illness and to avoid exposure to this virus.

REENA COMMUNITY FARM

Growing Vegetables and Innovative Solutions

The COVID-19 pandemic has required Reena to continue to be creative in its programs and fundraising efforts.

On January 6, 2021, Reena applied to the federal government's Agriculture Canada Local Food Infrastructure Fund for a capital grant to implement a Vertically Integrated Local Food Security Social Enterprise. On May 22, Reena was notified that it was awarded \$249,289 towards the project.

The project was expected to re-activate two existing greenhouses – at the Toby & Henry Battle Developmental Centre and Reena Community Residence – and if needed, add new greenhouse space behind a Reena group home.

Crops grown at the Reena Community Farm (RCF) were prioritized by the head chef at Bernard Betel's Meals on Wheels program, who would use the produce in the kosher meals they were preparing for the wider community.

Whatever Bernard Betel's kitchen was unable to use was packaged and distributed to Reena's group homes, where they would be used in the meals prepared by our support staff for the individuals they support.

A Reena employee who has his own working greenhouse took the initiative to start growing our plants and made starter plants available for planting in late June.



Reena used grant funds to purchase growing containers, soil and fertilizer. Two hundred of these containers were set up by Reena staff and volunteers in an open space behind a Reena group home in the 407 and Keele area. Starter plants were transplanted to these containers on June 23.

United Jewish Appeal of Greater Toronto stepped up and offered Reena a site to the south of the Reena Community Residence to set up the second RCF for the 2021 growing season, while the area behind a Reena group home in the Bathurst and Steeles area was prepared for the 2022 growing season.

Once the plants began growing, job coaches from the Reena Summer Employment Transitions (SET) program began hiring high school students for paid employment. A team of six summer students was assembled and began working in mid-July. Some of these students will continue paid employment through to the end of the harvest season in October 2021.

Continued on page 25 >



L-R: Emma Crystal, Jared Perlman – Setting up the containers at Rockview location



L-R: Emma Crystal, David Barnes, Jared Pearlman – Planting germinated seed at Rockview location



L-R: Gerald Nganjue, Nikolas Dzambas, Cristina Pajor – First visit to RCF at Crestwood location

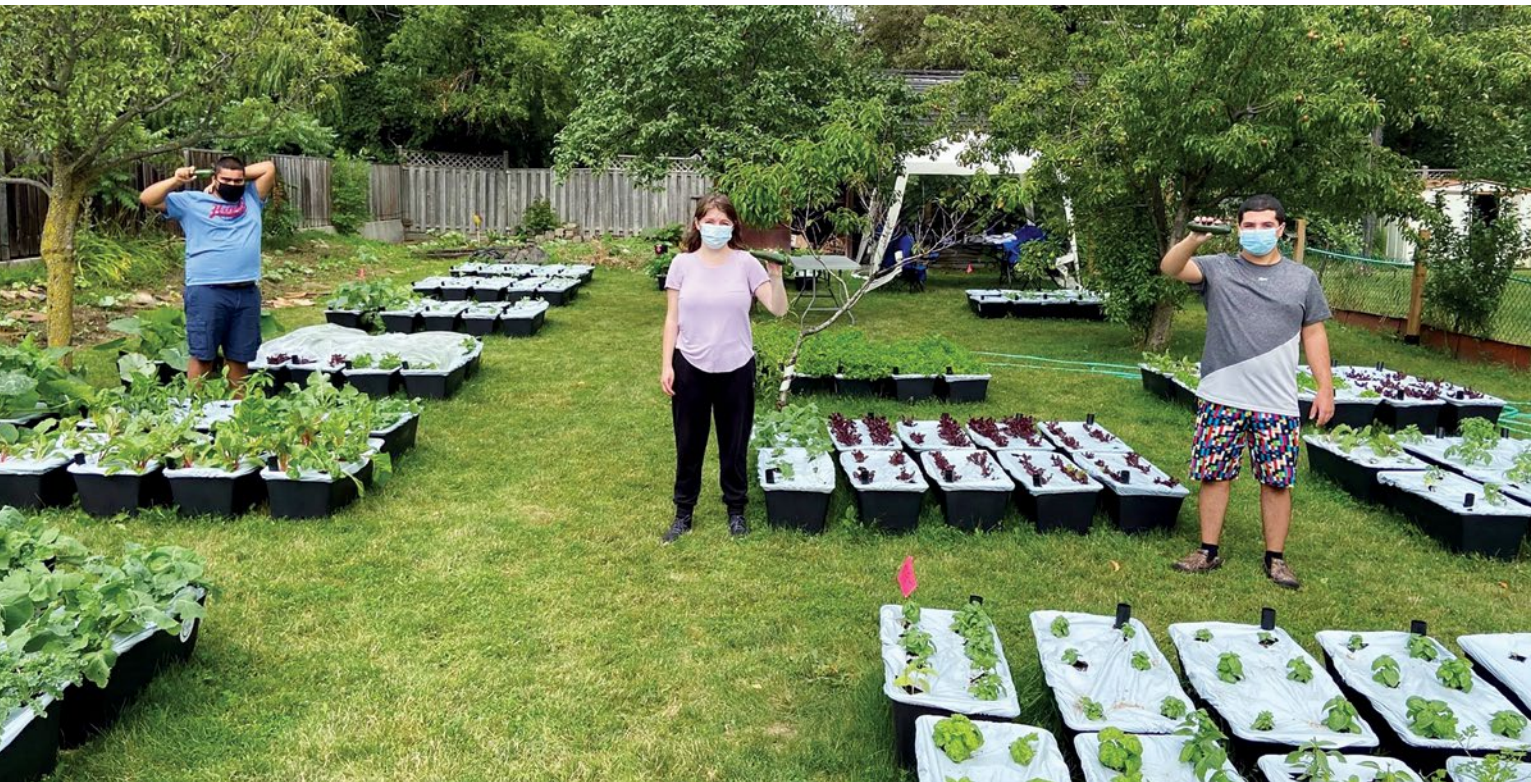


L-R: Chris Wong – Young Urban Farmers, Todd Lamswood – Head Chef, Bernard Betel Meals on Wheels Kitchen – First Harvest – RCF at Rockview location



L-R: Jared Perlman, Daniel Xia, Sophie Wood and Aria Hashemi – RCF at Reena Community Residence

REENA COMMUNITY FARM



L-R: Manav Naik, Sophie Wood and Aria Hashemi – First Harvest – Reena Community Farm at Rockview location



Joey Matchen – Filling the 10-litre water reservoir at Rockview location

Continued from page 23

Following COVID-19 protocols in effect at the time, the SET students worked outdoors, and were kept apart from group home and RCR residents. A number of RCR residents who already maintain their own personal gardens near the building were interested in joining the RCF effort.

The RCR residents contributed in their own way, through a Reena art program, by creating signs that would identify the crops being grown on the farm. The SET students have placed these signs near the crops growing at the RCR, so residents can know what is growing while standing safely behind the temporary fence separating RCR from the RCF.

We are hopeful that as COVID-19 restrictions are lifted, we will be able to train and employ Reena-supported individuals at the RCF.

Produce grown at the two RCF locations are now shipped to the Toby & Henry Battle Developmental Centre where other job coaches and SET students package the produce with GReena branding, ready for Reena group home distribution. Supervisors are then advised what crops are available and ready for pick-up.

In Vaughan, container growing is viable from April to October. The RCF project management team is looking at options for year-round growing as well as securing additional paying customers for GReena produce.



Todd Lamswood – Receiving zucchinis at the Bernard Betel Kitchen



Bernard Betel Meals on Wheels dishes, which include RCF zucchini as a main ingredient

If you would like to volunteer to help with the Reena Community Farm, please contact volunteering@reena.org, and we will get you connected.

FOUNDATION EVENTS

Striking for Reena



Reena bowlers wearing the sweatshirts they created and showing off their new medals

Our ninth Annual **Striking for Reena** bowling event was held in October and raised over \$305,000. This brings our nine-year total to **over \$1.6 million!**

Due to COVID-19, bowling alleys were closed and large gatherings were restricted to keep everyone safe and healthy.

Reena responded by bringing the event directly to those we support:



Organized
week-long
bowling
activities



Delivered
100
pizzas



Delivered
400
swag bags and
medals



Delivered
500
thank you gifts to
our frontline staff

Continued on page 28 >



Team – For the LEV of the Game



Team – The Fruitman Canoodles – American League



Reena COO, Sandy Stemp, delivering “thank you” packages



Alison – Team Captain – Covid Bowlers



Team – The Fruitman Canoodles – Canadian League

FOUNDATION EVENTS

Continued from page 26



Tom Brown – MC

We extend a heartfelt thank you to **Tom Brown** for once again, being a fabulous MC.

We thank our incredibly generous sponsors and donors, outstanding committee, virtual bowlers, staff, volunteers and every member of the extended Reena family!

CO-CHAIRS

Steven Justein & Elaine Justein

COMMITTEE MEMBERS

Carla Beker, Mitchell Cohen, Cheryl Gould, Sheryl Hartman, Jacquie Kerbel, Rochelle Kerzner, Jocelyn Levine-Middlestadt, Michelle Moll, Mona Sherkin & Risa Kurtz Whitnall

PRESENTING SPONSORS

Global Furniture Group
Teknion

KING PIN SPONSOR

Paradise Developments

SPARE ME SPONSORS

The Amanda Jaclyn Berger Memorial Fund
The Sam & Gitta Ganz Family Foundation
Harry Rosen
Stronach & Sons Inc.

GUTT-ER-DONE SPONSORS

Sam Alter
Fred & Bryna Steiner



Stephen – Team Member – Justein Holy Rollers

FAST LANE FRIENDSHIP SPONSORS

Anonymous
Denise & Eliezer Robbins

I CAN'T BELIEVE IT'S NOT GUTTER SPONSORS

Appleby Pharmacy
Fuller Landau LLP
The Michaels Family
Owemanco

RIGHT UP YOUR ALLEY SPONSORS

Arimco Services Inc.
Jeff & Karen Citron
The Cohn Family
Cooper's Iron + Metal
Daurio & Franklin LLP Chartered Accountants
Family Properties
Jeffrey B. Rubinoff Fund
SHS Consulting
Sonderbloom
Total Credit Recovery
Dr. Richard Wood



Yosef – Team Member – Tenpin Commandments



Kyle – Captain – Kyle's King Pin Crushers



Jon – Captain – The Sherk-Pins



Sheryl – Co-Captain – The Hartman Hearts



Team Reena Captain accepting her prize

FOUNDATION EVENTS

One Word at a Time



Author, Michele Viner



Dr. Marla Shapiro

On January 12, Reena Foundation hosted a discussion about mental health with **Michele Viner**, author of *A Few Words About Mental Health*. The virtual event was moderated by **Dr. Marla Shapiro**.

A Few Words about Mental Health is just that – a list of words written for those struggling with mental health issues, and for those who love and support them. The book was written to inspire and encourage, **one word at a time**.

The event included an online auction featuring paintings created by Reena artists, based on their favourite words from the book.

Thank you to our generous sponsors and donors, our outstanding committee, our distinguished speakers, the Reena artists, our staff and honoured guests.



"You're helping bring us one step closer towards breaking the stigma around mental health once and for all."

Hon. Michael Tibollo,
Associate Minister of Mental
Health and Addictions



"My favourite word from Michele's book is 'meh', as in its been kind of a crappy day, but there's another one coming tomorrow."

Ken Shaw,
Committee Member



"My daughter, Talia has been living independently at a Reena Residence for nearly three years. I have seen both professionally as a Rabbi and personally as a father, how Reena transforms lives by giving respect, confidence, care and love."

Rabbi Aaron Flanzraich,
Reena's Spiritual Advisor,
Parent & Committee Member



"We're all living a bit of a daily roller coaster with our emotions, especially during these difficult times. We've noticed how vulnerable we all are. This could happen to anybody."

Rochelle Goldman-Brown,
Executive Director,
Chai Tikvah



Reena Artist

One of our favourite words from the book is **grateful**. We were truly **grateful** to all involved for joining us to help break the mental health stigma... **One Word at a Time**.

COMMITTEE MEMBERS

Dr. Alan Bardikoff	David McCoy
Carla Beker	Haresh Mehta
Amanda Belzowski	Carolynn Morrison
Bob Berger	Vikki Mungre
Raksha Bhayana	Marnie Silver Nelson
Madeleine Bodenstein	Tali Nizic
Hayden Cantor	Ellis Orlan
Rick Chad	Rabbi Avraham Plotkin
Charles Chee	Rebbetzin Goldie Plotkin
Eitan Dehtiar	Rebecca Richman
Lisa Fruitman	Jon Schwartz
Sandy Gennis	Jeff Shankman
Shveta Hariharan	Ken Shaw
Sheryl Hartman	Mona Sherkin
Steven Justein	Dr. Earl Silverman
Belinda Keshen	Tom Ungar
Bryan Keshen	Councillor Khalid Usman
Mira Laufer	Gillian Weintraub
Mario Longo	Risa Kurtz Whitnall

Thank you to our generous sponsors:

INSPIRE SPONSORS

Harry E. Foster Foundation
Anthony Lisanti
S&A Developments

BELIEVE SPONSORS

Fieldgate Construction
Management Limited
Jayze Properties Inc
David Green and Daphne Wagner

HOPE SPONSORS

Gerald and Sheryl Hartman
Inline Communications
Edwin and Miriam Merkur
Foundation

REFRAME SPONSOR

Elevator Digital Ltd.

DREAM SPONSORS

Anonymous
Brodlied Legal
The DH Gales Family Charitable
Foundation of Toronto
Rotary Club of York
Scotiabank
Dr. Earl Silverman and
Dr. Joanne Bargman
Tracsteel Ltd.
Aaron Waxman & Associates

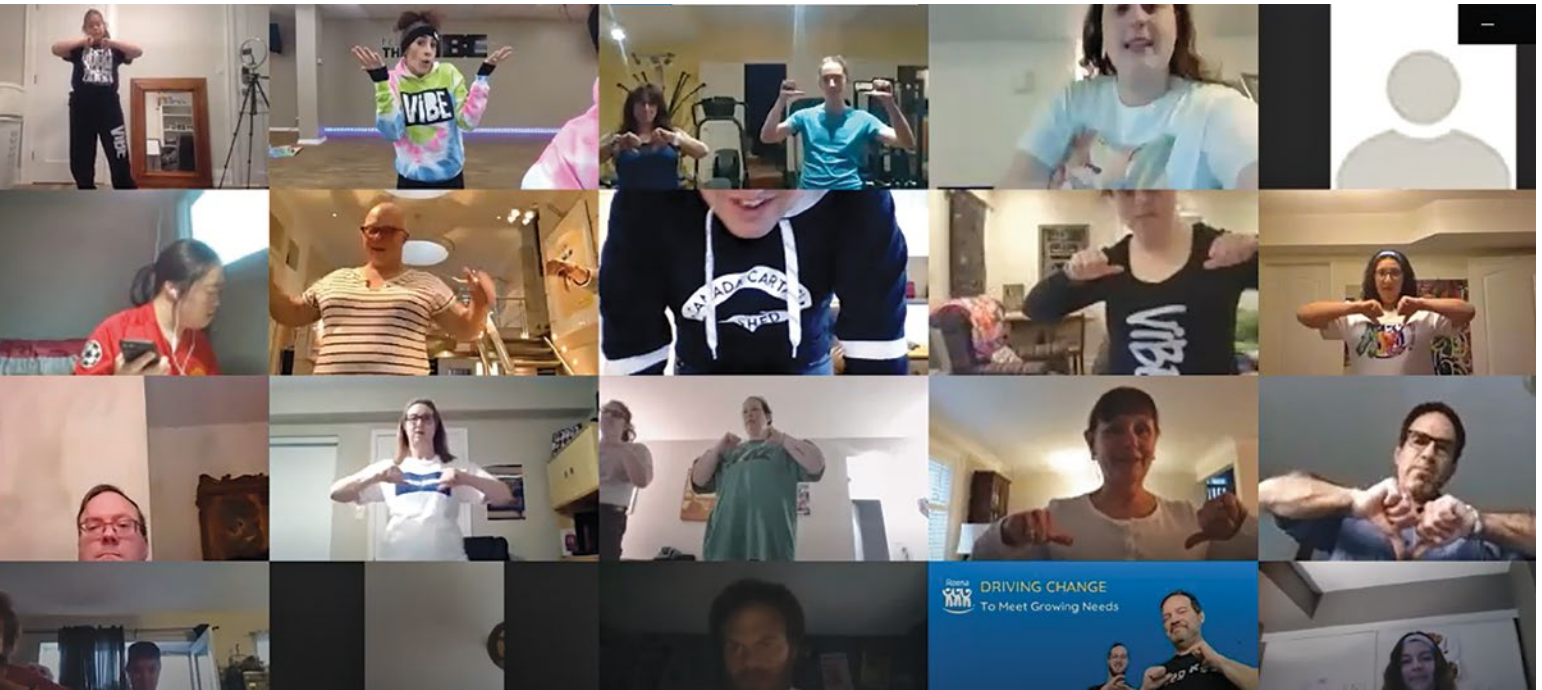
CRAP SPONSOR

Lampert Plumbing

FOUNDATION EVENTS

Step Up for Reena

Vibe and Reena Kick Up Their Heels



Virtual participants dancing for Reena

On April 27, 2021, the super twins behind ViBE Dance and Fitness Studio, Marnie and Rena Schwartz, hosted Step Up for Reena, a virtual dance party for Reena friends and family.

The brainchild of Dance co-chairs Dayna Lepofsky, whose uncle is an individual supported by Reena, and her friend Reut Shilton, the dance class, which attracted more than 100 participants, was a creative and healthy way to connect and raise funds for Reena Foundation.

Of course, where there's an event this creative and positive, you know there had to be a Tik Tok connection, and thanks to the participation of Tik Tok star Julia Slater, who has more than one million followers on the popular platform, this was no exception.



Bayla Lev



Julia Slater



Rena and Marnie Schwartz

Julia, an individual supported by Reena, is also one of ViBE's most popular dance instructors.

The event perfectly embodied the philosophy of Marnie and Rena, which is that everyone deserves to feel important, accepted and included. It was also a day that celebrated the Jewish value of L'Dor Vador, or generation to generation, as the granddaughter of former Reena Foundation Chair Frank Wilson volunteered, as did



Dayna Lepofsky and Reut Shilton

Bayla, the young and talented daughter of Reena Foundation's Event Manager, Shira Lev. Bayla ran her own virtual art program for her 10-year-old peers and shared the proceeds with both Reena Foundation and Ve'ahavta.

In appreciation, the organizers were presented with paintings created by Reena individuals. "Love, Freedom & Home" now hangs proudly at ViBE, a perfect description of the sentiments expressed by all who attended.

FOUNDATION EVENTS

Swinging for Reena



L-R: Jeff Shankman, Steven Justein, Steven Libfeld

On August 17, 2021, **Tribute Communities** hosted the 10th annual **Swinging for Reena** golf tournament at Angus Glen Golf Club.

To date, Swinging has cumulatively raised **over \$2 million** in support of Reena Foundation. Proceeds have paid for many of Reena's greatest needs including a wheelchair accessible van, renovations to

the Toby & Henry Battle Developmental Centre and many programs including respite, summer camp and technology. Funds from the most recent tournaments have been directed to the capital campaign for the Lou Fruitman Reena Residence. We thank the Libfeld Family and everyone at Tribute Communities for their continued support and extraordinary generosity.

Thank you to all our generous donors, sponsors and players!

WAHLBURGER SPONSOR

RBC

BREAKFAST SPONSORS

CRH Canada Group Inc. /
Dufferin Concrete
O'Neil Electric Supply Ltd.
The Frankfort Family

LUNCH SPONSORS

Bell Canada
Crozier & Associates
Consulting Engineers
Viana Roofing & Sheet Metal
Limited

CART SPONSORS

Deloitte Private
Ferris + Associates Inc.
Global Precast
Golder Associates
Keller Foundations Ltd
Whirlpool Canada

GIFT SPONSORS

MultiRes Waterproofing Company
Owens Wright LLP
Pilen Construction of Canada Ltd.
Turner Fleischer Architects Inc

FOURSOMES

Anax Roofing
Aurivia Stone Design Inc.
Avenue Building Corporation
Belmar Ventilation Systems Inc.
Bousfields Inc.
Brampton Brick Limited
Cassels Brock & Blackwell LLP
Cassidy & Co.
Citywide Group
Core Architects
Crozier & Associates Consulting
Engineers
D.G. Biddle & Associates Limited
Enercare

Exclusive Carpentry Ent. Ltd.
Finnegan Marshall Inc.
FirstService Residential
Foremont Drywall Contracting
GFL Infrastructure Group Inc.
Giancola Aluminum
Contractors Inc.
Global Precast
Golder Associates
Granitec Inc.
Graziani & Corazza Architects Inc.
Greybrook Realty Partners Inc.
Grounded Engineering
IBI Group
Ideal Railings
Irpinia Kitchens
Jablonsky, Ast and Partners
Jackson Roofing GTA Inc.
Joben Construction Ltd.
Joe Capone
Jones Deslauriers Insurance
Management Inc.
Keller Foundations Ltd
Lakeridge Contracting Ltd.
Leader Plumbing & Heating Inc.
Litemode Limited
Live Patrol
LNR Alarms Inc.
Marycroft Tile
Masters Insurance
Mayfair Electric Limited
Metropolitan Home Products
Miller Bernstein LLP
Mitchell Tomulka
Moen Inc.
MultiRes Waterproofing Company
New Generation Group
Nodis Ltd
O'Neil Electric Supply Ltd.
Penegal Trim & Supply Limited
Pilen Construction of Canada Ltd.
Primo Mechanical Inc.
Provident Energy Management
Inc.
Quality Sterling Group

Rogers Communications
Canada Inc.
Royal LePage New Concept,
Brokerage
Scotiabank
SCS Consulting Corp
Steven Justein, Jeff Shankman,
Grace McNamara &
Benn Spiegel
TACC Construction Limited
TD Bank
Tercot Management Inc.
Terrapave Constructions
The Brown Group
The MBTW Group
The Sorbara Group / N.H.D.
Developments Limited
Toro Aluminum
Trace Engineering Ltd.
Trans Power
Travelers Insurance Company
of Canada
Tribute Communities
Viana Roofing & Sheet Metal
Limited
Vintage Hardwood Flooring
WSP
Zencorp Mechanical Inc.

FOOD TRUCK SPONSORS

Delta Urban Inc.
Desjardins Financial Security Life
Assurance Company
Dolente Concrete & Drain Co.
Giancola Aluminum
Contractors Inc.
Jeff Shankman, Barrister
& Solicitor
Medi Group Incorporated
Michael Bros. Excavating
Reena Foundation Board of
Directors
The Sorbara Group / N.H.D.
Developments Limited
Toro Aluminum

Continued on page 36 >



One of the many delicious food options available for Swinging golfers to enjoy on the course

Continued from page 35

Trace Engineering Ltd.
Vitullo Plumbing Ltd
WeirFoulds LLP
Zencorp Mechanical Inc.

TEE & GREEN SPONSORS

Brampton Brick Limited
Citywide Group
Coreydale Contracting Co.
Desjardins Financial Security
Life Assurance Company
Miller Bernstein LLP
Westmount Guarantee
Services Inc.

TEE SPONSORS

Belmar Ventilation Systems Inc.
Cassidy & Co.
Cervini Painting and
Decorating Ltd.
Core Architects
EXP Services Inc.
Giancola Aluminum
Contractors Inc.
Graziani & Corazza Architects Inc.
Ideal Railings

Live Patrol
McCarthy Tetrault LLP
Mega City Tiling
Michael Bros. Excavating
Moen Inc.
Penegal Trim & Supply Limited
Perfect Glass & Mirror
Primo Mechanical Inc.
Reliable Painters & Decorators Ltd.
Roman Metal Fabricating Ltd
Rosewood Flooring
Scotiabank
TACC Construction Limited
Trans Power
Zulmar Construction Inc.

PLAYERS

Blaney McMurtry LLP
Cervini Painting and
Decorating Ltd.
Greenwall Concrete Forming Ltd.
J.A.K. Electrical Contractors
Normac Kitchens Limited
Pelican Woodcliff
Perfect Glass & Mirror

RJC Engineers
Rosewood Flooring
Sun-Brite
TORLYS
Tribute Communities
Westmount Guarantee Services Inc.

DONORS

ALMB Holdings Inc.
Amir Remtulla
Anonymous
F & M Caulking Ltd.
Guidelines Advertising Inc.
Insitu Contractors Inc.
Lee Rocca Forming Limited
Newmar Window
Manufacturing Inc.
Paragon Drywall Contractors Ltd.
Shipway Stairs
Speedy Electrical Contractors
The Shadigee Investment
Corporation
Torx Investments Ltd.
Velcan Forest Products
York Sheet Metal Limited



L-R: Sheila Lampert, Warren Kimel, Dr. Alan Berger, Steven Justein, Robert Berger

A Day at the Nest

On August 5, 2021, **Dr. Alan Berger** organized a wonderful day of golf in support of Reena Foundation. The tournament took place at **Nest Golf Club**, located along Lake Simcoe in Innisfil.

The event raised over **\$34,000**. Proceeds will support programs for individuals with Autism and other developmental disabilities at the Lou Fruitman Reena Residence.

This is the second golf event organized by Dr. Berger and we thank him and his guests *fore* their continued and generous support.

DONORS

We are extremely grateful to our donors for their generosity.

\$5,000,000 +

The Lou and Betsy Fruitman Family

\$2,500,000 +

Azrieli Foundation
Miriam and Larry Robbins Foundation

\$1,000,000 +

The Warren and Debbie Kimel Family Foundation
The Sherman Foundation

\$250,000 +

Albert and Esther Michaels
Paradise Homes Corp. –
The Weisz/Baruch Families
The Serruya Family Foundation
Tribute Communities

\$100,000 +

Estate of Toby Danchig
Fabricland Distributors Inc.
Fieldgate Cares Foundation
Estate of Sidney J. Lipton
UJA Federation of Greater Toronto
Robert and Mona Sherkin
Anonymous

\$10,000 +

Robert Berger and Marla Shapiro
The Bregman Family
Harry and Rochelle Green
Italform Limited
Jacob's Ladder
Estate of Judith Knelman
Ida Lover Endowment Fund at the Jewish Foundation of Greater Toronto
Barry and Esther Naiberg Family Endowment Fund at the Jewish Foundation of Greater Toronto
Estate of Eva Salamon –
Leslie Salamon Trust

Ken Tencer and Esther Mamane-Tencer
Anonymous

\$5,000 +

Ethel Abramowitz
Donald Altman
Deborah Berlach
Jeff and Janet Bernstein
Brands International Corporation
Freeman Family Legacy Fund at the Jewish Foundation of Greater Toronto
Gary Bluestein Charitable Foundation
Steven Gottlieb
Heidi Latsky Fund
Bruce and Lianne Leboff
Anthony Lisanti
Estate of Earl Mandell
The Jewish Family & Child Foundation
Woolly Mammoth Outerwear Inc.
Anonymous

\$1,000 +

Aqueduct Foundation
Norma Bain
Shelagh Barrington and George Maclaren
Wendy Bellack-Viner and Les Viner
Jean Byers
George Cantlie
Canvas Developments
Josh Cole
Collin and Marian Craig
Dr. Keith Meloff Medicine Professional Corporation
Alex Eisen
Stanley and Ilana Emerson
Ernest & Barbara Goldberger Endowment Fund at the Jewish Foundation of Greater Toronto
Ab ^{z'l} and Phyllis Flatt
Manny Fogel Fund at the Jewish Foundation of Greater Toronto

George and Judy Frankfort
Stan and Diane Gasner
John Gelmon
Harold Goldberg
Goldstein Family Fund at the Jewish Foundation of Greater Toronto
Allan and Tova Gutenberg
Angela Iannuzziello
Joseph and Anne Jacob
Joseph Frieberg Family Charitable Foundation
David Kassie and Susan Harris
Kelman Charitable Foundation
Ted Kurtz
Lagover Mutual Benefit Society
Ellen Larsen
Lechaim Catering
Steven Libfeld
James Macdonald
Ruth Mandel
Alexander and Miriam Margulis
Sal Marrello
Jim McGrath and Anita Levin
Philip and Sheila Meretsky
Miller Bernstein LLP
Dale and Carolyn Morrison
Michael Nethercott and Sarah Hobbs
Ellis and Orit Orlan
Jane Radford
The Samuel J. and Jean Sable Family Foundation
Charles and Mina Schwarz
Steve and Sarah Sherman
Miriam Stoll
Bernardo and Ana Sztabinski
Martin and Penelope Tepper
The Cowan Foundation
The Philip Smith Foundation
The Principle Brands Inc.
Gilda Whyne
Zencorp Mechanical Inc.
Anonymous

ENDOWMENT FUNDS

We thank our Endowment Fund holders for their commitment and continued support.

Aaron Murray Keshen Music
Abramowitz Family
Al and Sheila Libfeld
Alex Flomen Memorial
Alex, Olga and Marvin Eisen
Allen and Judy Berg
Angela Iannuzziello
Aronovitch Family
Bacal Family
Barrington Family
Bernard J. (Ben) and Rose Katz
Bernice Guziker
Bert and Marilyn Raphael
Advocacy
Binder-Peckman Education
Carl Zynoberg Family
Catalano Family
Danny Dymond Family
David and Molly Kelman
Memorial
David Esplin
David J. Nizic
David, Deborah and
Harold Breslove
Diane Harris
Donald Lipman
Durigon Family
E.B. Esplin
Ed Richmond
Eiley Family
Epelbaum Family
Erin Hopkins Family
Ernie Weiss
Ethel and Hirsch Erdle
Fern Aronoff
Frances O'Leary Family
Frank and Elaine Simkevitz Family
Frank and Judy Wilson
Fred and Sugie Feldman Family
Fred Samuels
Goose Family
Hanigsberg/Sossin
Harry Edelstein
Helen and Al Levin

Helen Unger
Husky Sherkin
Irving and Anita Marcus
Irving and Sylvia Ungerman
Jack and Pearl Mandel
Jack Arthur Swift
Jenny Hammond
Jesion Family
Joan Glick Gold and Family
Joan Warren
Joe and Helen Berman
Joel Schwartz
Jolene and Morris Carrady
Jon Sherkin
Jordan and Sandi Soll and Family
Joshua, Zachary and
Catherine Machado
Justein Family
Kazman Family
Kenny Freeman
Kieselstein Family
Laura Cohen
Leanne Begley
Les and Gertie Bulkin
Les Agasee
Leslie Hartman
Lipa and Guta Fleising
Liss Family
Magna Dinner
Martin Goodman
Mayda and Max Beck
Mayers Family
Melvin Yale Katz Family
Michael and Tillie Blidner
Michaels Family
Morris & Beverly Baker
Foundation
Morris and Faye Vanek
Morris and Mary Yuchtman
Family
Morris Henechowicz
Morrison Family
Nethercott Family
New Leadership

Norman and Fay Bacher
Orit and Ellis Orlan
Patricia McKellar Family
Paul Cantlie
Peake Family
Pearl Goldstein Cont. Education
Phyllis and Irving Feldman Family
Rabbi Joseph E. Kelman
Rajzman/Wagschal Family
Rayman Family
Rebecca Farb
Reena General
Rienne Fleischmann
Robert Berdugo
Rose and Max Goldenberg
Rose and Manny Lipman
Roslyn and Norman Climans
Ross Family
Sam and Mona Juravsky
Sandy and Jerry Brooks
Schwartz Family
Sherman Family
Stevie Gottlieb
Stu and Fay Rotman
Susan Harris and David Kassie
Sybil Goldberg
Syrma and Harold Kochberg
Family
Tamara Benjamin
Ted B. Chester Family
Teper Family
The Anne & Joe Jaffe Literacy
Trevor Rosenberg
Wachsberg Family
Weisman Family
Weizenberg Family
Whyne/Karp Family
Wilson Family

REENA SUMMARY FINANCIAL STATEMENTS

Summary statement of financial position

As at March 31, 2021

	2021 \$	2020 \$
ASSETS		
Cash	8,324,779	827,416
Due from Batay Reena	338,492	897,490
Due from Reena Foundation	22,180	34,394
Other current assets	5,229,226	3,811,037
Prepaid lease	683,908	674,009
Capital assets	53,555,340	35,349,944
	68,153,925	41,594,290
LIABILITIES		
Other current liabilities	14,361,520	11,893,812
Deferred capital contributions	29,205,495	18,520,176
Mortgages and construction loans payable and replacement reserve	20,534,369	8,830,299
	64,101,384	39,244,287
FUND BALANCES	4,052,541	2,350,003
	68,153,925	41,594,290

Summary statement of operations and changes in net assets

Year ended March 31, 2021

	2021 \$	2020 \$
REVENUE		
Government grants	60,699,969	43,290,882
Rental revenue and user fees	5,699,719	7,109,433
Grant from Reena Foundation	170,756	524,835
Amortization of deferred capital contributions	1,105,456	1,087,951
Other income	524,718	1,173,175
	68,200,618	53,186,276
EXPENSES		
Salaries, contract wages and related costs	45,050,133	40,612,147
Food and supplies, accommodation and support for individuals' personal needs	14,613,424	6,178,696
Interest on mortgages	110,985	83,877
Purchased services and professional fees	4,600,783	3,167,458
Amortization of capital assets	1,400,033	1,394,953
Other	564,938	1,134,519
	66,340,296	52,571,650

Summary statement of operations and changes in net assets – *continued*

Year ended March 31, 2021

Excess of revenue over expenses before the undernoted items	1,860,322	614,626
Pay equity expense	(157,784)	(565,373)
Gift from Batay Reena		1,245,357
Excess of revenue over expenses for the year	1,702,538	1,294,610
Fund balances, beginning of year	2,350,003	1,055,393
Fund balances, end of year	4,052,541	2,350,003

Summary statement of cash flows

Year ended March 31, 2021

	2021 \$	2020 \$
Cash provided by operating activities	3,179,732	3,728,240
Cash used in investing activities	(7,302,936)	(9,021,490)
Cash provided by financing activities	11,620,567	3,330,219
Net increase (decrease) in cash during the year	7,497,363	(1,963,031)
Cash, beginning of year	827,416	2,790,447
Cash, end of year	8,324,779	827,416

Notes to the summary of financial statements

1. Summary financial statements

Reena has prepared these summary financial statements to be included as part of its annual report. These summary financial statements present the same information as the audited financial statements, except for the notes to the audited financial statements. Complete audited financial statements are available upon request.

2. Change in accounting policy

Effective April 1, 2019, Reena adopted Canadian accounting standards for not-for-profit organizations related to Section 4431 Tangible capital assets held by not-for-profit organizations (the "Standard") on a retrospective basis with full restatement of comparative amounts as disclosed in the notes to the audited financial statements.

For complete audited financial statements, please call (905) 763-8254 x 3027.

BOARDS OF DIRECTORS

REENA

IMMEDIATE PAST CHAIR

Jeff Bernstein

CHAIR

Charles Chee

VICE CHAIR

Wendy Bellack-Viner

SECRETARY

Dr. Faisel Saeed

TREASURER & CHAIR FINANCE COMMITTEE

Eitan Dehtiar

CHAIR GOVERNANCE/ NOMINATING COMMITTEE

David Cohen

CHAIR – CONTINUOUS QUALITY IMPROVEMENT (CQI)

David MacCoy

DIRECTORS

Nirmala Armstrong

Dr. Alan Bardikoff

Rachel Blumenfeld

Mindy Ginsler

Tova Gutenberg

Gerald Hartman

Daniel Horowitz

Jodi Kaiman

Mike Manett

Marnie Silver

Dr. Earl Silverman

Howard Weinroth

CEO

Bryan Keshen

FOUNDING CHAIR

Rabbi Joseph Kelman ^{zt'l}

FOUNDING PRESIDENT & TREASURER

Lou Fruitman ^{z'l}

ASSOCIATES

Alison Arshinoff

Melissa Shlanger

SPIRITUAL ADVISOR

Rabbi Aaron Flanzraich

REENA FOUNDATION

IMMEDIATE PAST CHAIR

Jeff Shankman

CHAIR

Steven Justein

VICE CHAIR

Mona Sherkin

SECRETARY

Robert Berger

TREASURER

Marnie Silver

DIRECTORS

Madeleine Bodenstein

Rick Chad

Lorne Cohn

Michael Gasch

Howard Kruger

Sue-Ann Levy

Ellis Orlan

Robert Sherkin

Esther Mamane-Tencer

Tom Ungar

Risa Kurtz Whitnall

EXECUTIVE DIRECTOR

Sheila Lampert

FOUNDING CHAIR

Hy Eiley

PAST CHAIRS

Hy Eiley

Ronald Hoffman

Ira Sack

Gerald Hartman

Frank Simkevitz

Murray Klein

Frank Wilson

Leon Kieselstein

Irving Feldman

Mike Nethercott

BATAY REENA

IMMEDIATE PAST CHAIR

Howard Ungerman

CHAIR

Harold Seidel

SECRETARY/TREASURER

Daniel Horowitz

DIRECTORS

David Cohen

Victor Helfand

Michael Krofchick

Michael Manett

Jeff Shankman

CHAI TIKVAH

CHAIR

Earl Silverman

SECRETARY

Sherry Garber

TREASURER

Ygal Kramrish

DIRECTORS

Dr. Alan Bardikoff

Mindy Ginsler

Jodi Kaiman

Bryan Keshen

Carolyn Morrison

EXECUTIVE DIRECTOR

Rochelle Goldman-Brown

*"I like the painting program
because it makes me relaxed."*

Brenda K.



**Reena**

Toby & Henry Battle Developmental Centre
927 Clark Avenue West, Thornhill, ON L4J 8G6
[e. info@reena.org](mailto:info@reena.org) [t. \(905\) 889.6484](tel:(905)889.6484) [f. \(905\) 889.3827](tel:(905)889.3827)

Batay Reena

315 – 1 Promenade Circle, Thornhill, ON L4J 4P8
[e. batay@reena.org](mailto:batay@reena.org) [t. \(905\) 763.8254](tel:(905)763.8254), ext. 3027 [f. \(905\) 763.8272](tel:(905)763.8272)

Chai Tikvah

313C – 1 Promenade Circle, Thornhill, ON L4J 4P8
[e. Rochelle@chaitikvah.org](mailto:Rochelle@chaitikvah.org) [t. \(416\) 634.3040](tel:(416)634.3040) [f. \(416\) 634.3051](tel:(416)634.3051)

To make a gift please contact:

Reena Foundation

313C – 1 Promenade Circle, Thornhill, ON L4J 4P8
[e. info@reenafoundation.org](mailto:info@reenafoundation.org) [t. \(905\) 763.8254](tel:(905)763.8254) [f. \(905\) 764.0595](tel:(905)764.0595)

reenafoundation.org

reena.org



@ReenaFoundation



/company/reena/