

Reena - Elm Ridge Community Conversation

November 3, 2021

Reena



Agenda

- Greetings - Councillor Mike Colle
- Introduction to Reena
- Housing Needs
- Update since April 6, 2021
- Conversation :Q &A
- Next Steps

Reena

- Reena promotes dignity, individuality, independence, personal growth and community inclusion for people with diverse abilities within a framework of Jewish culture and values.

The Three Abilities Needed for Supportive Housing

1. **Afford-ability** – How do we get to under \$500 a month rent?
2. **Support –ability** – How do we get just the right supports?
3. **Acces-ability** – What are the unique and common access needs?

Intentional Community Principles



**Person-
Centred
Approach**



**Safe &
Welcoming
Environment**



**Inclusion &
Diversity**



**Strong &
Respectful
Collaboration**



**Living &
Sharing Life
Together**

Updates

- Community Need
- Fundraising
- Discussions with City planning team
- Site plan and zoning application

Location



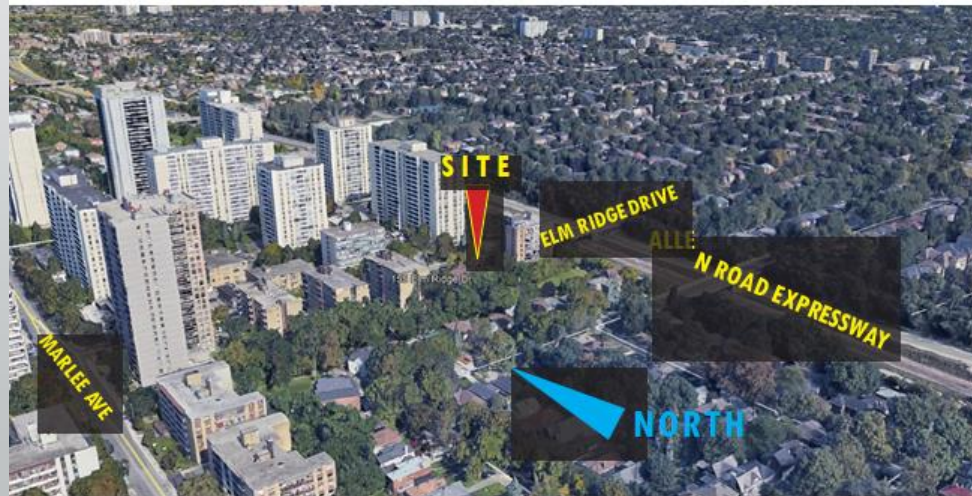
Location



A-View Looking South-East

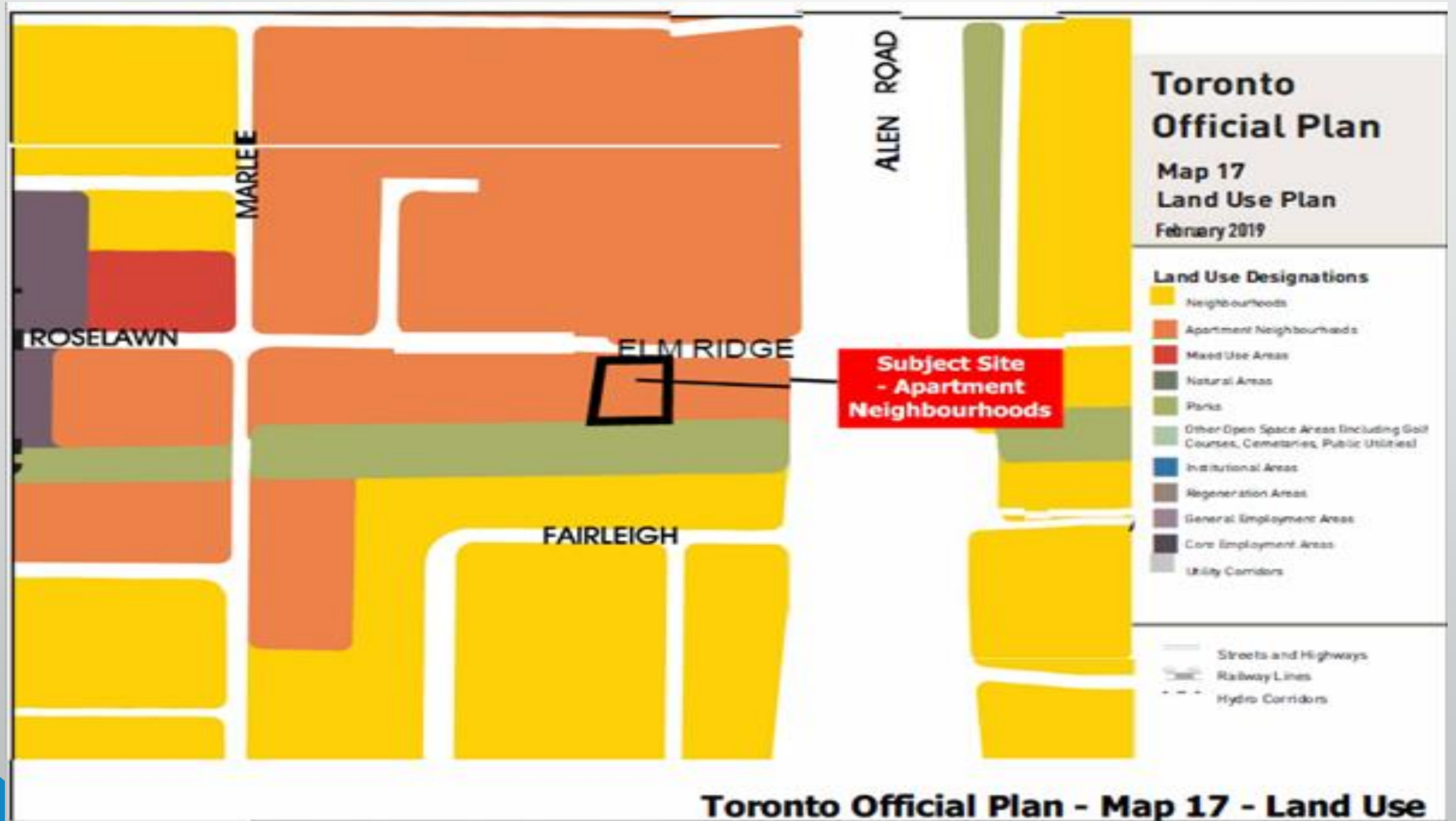


B-View Looking East



C-View Looking North-East

Land Use Map



Height Map



Building



Views of the Building



VIEW LOOKING SOUTH WEST



VIEW LOOKING SOUTH EAST



VIEW LOOKING NORTH EAST



VIEW LOOKING NORTH WEST

RICHMOND Architects Ltd.

55 EGLINTON AVENUE EAST
SUITE 802
TORONTO, ON M4P 1G8

T: 416 961 1567
RICHMONDARCH.COM

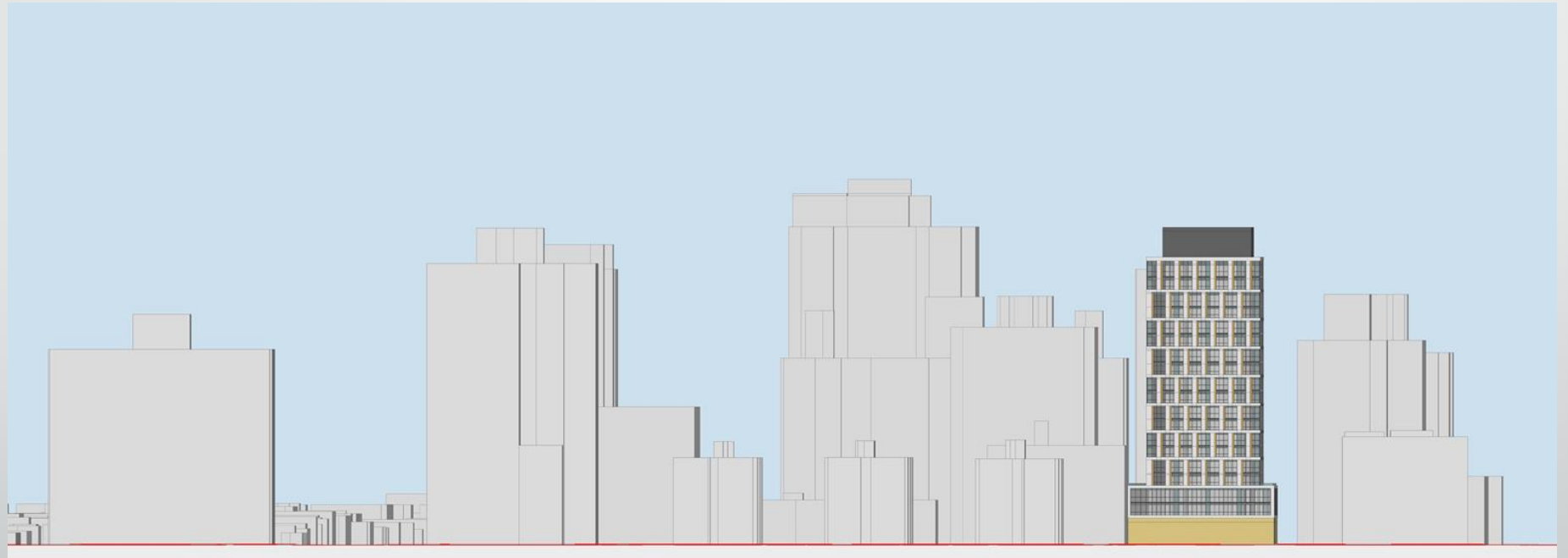


AERIAL VIEWS

PROPOSED RENTAL RESIDENCE DEVELOPMENT

155 ELM RIDGE, TORONTO, ONTARIO

Elevation

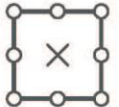


South Elevation

Building Information


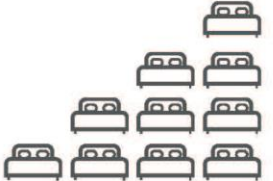
Proposal Highlights

Height  19 Storeys + Intermediate level (62.7m Plus 6.5m PH)

Site Area  1,207 m²

Gross Floor Area  10,905.5 m²

Density  9.03 FSI (Floor Space Index)

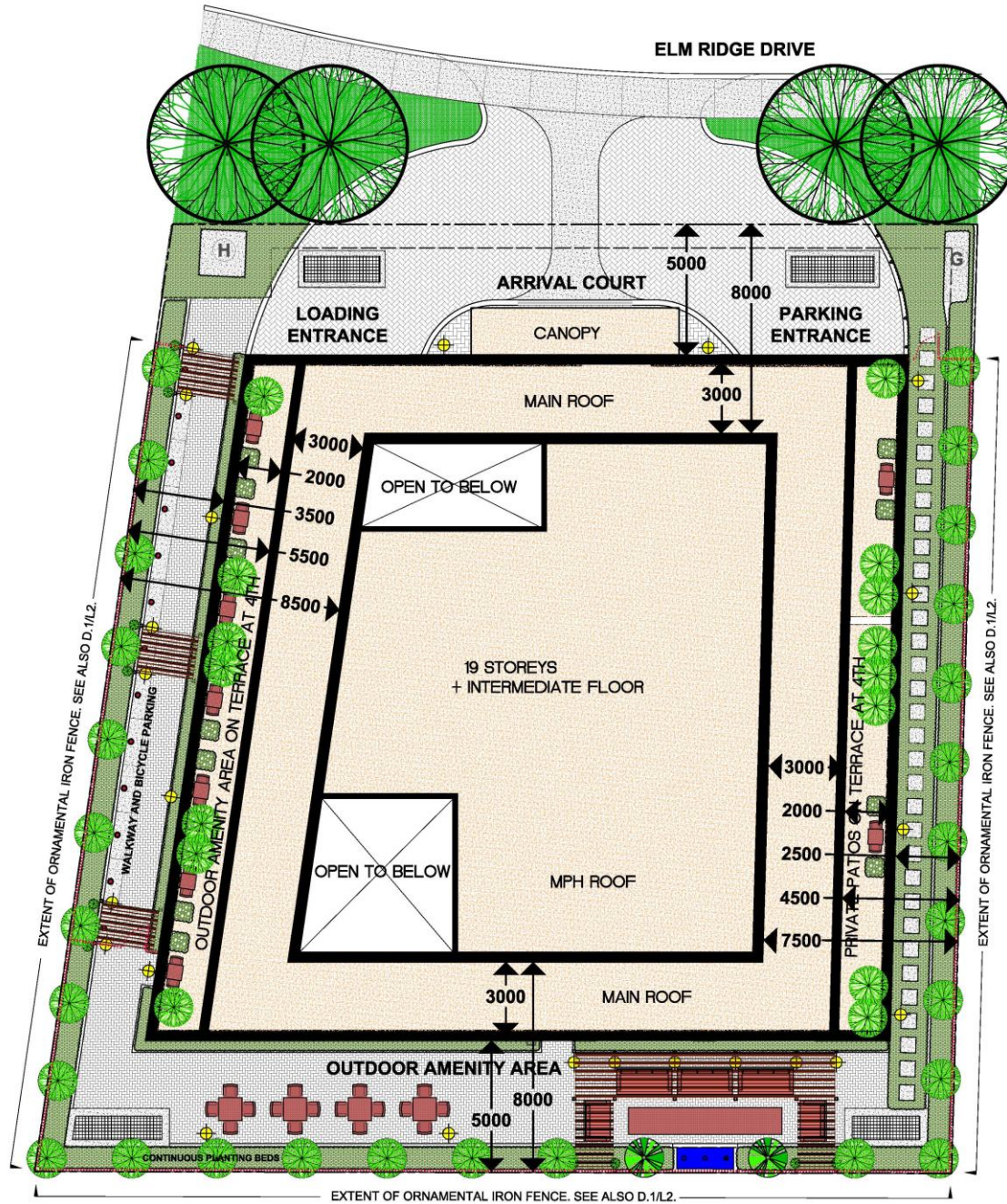
Residential Units  **106 Units**

25 studios (23%)
41 1-bedroom (39%)
23 2-bedroom (22%)
14 3-bedroom (13%)
3 4-bedroom (3%)

Indoor Amenity Space  426 m²

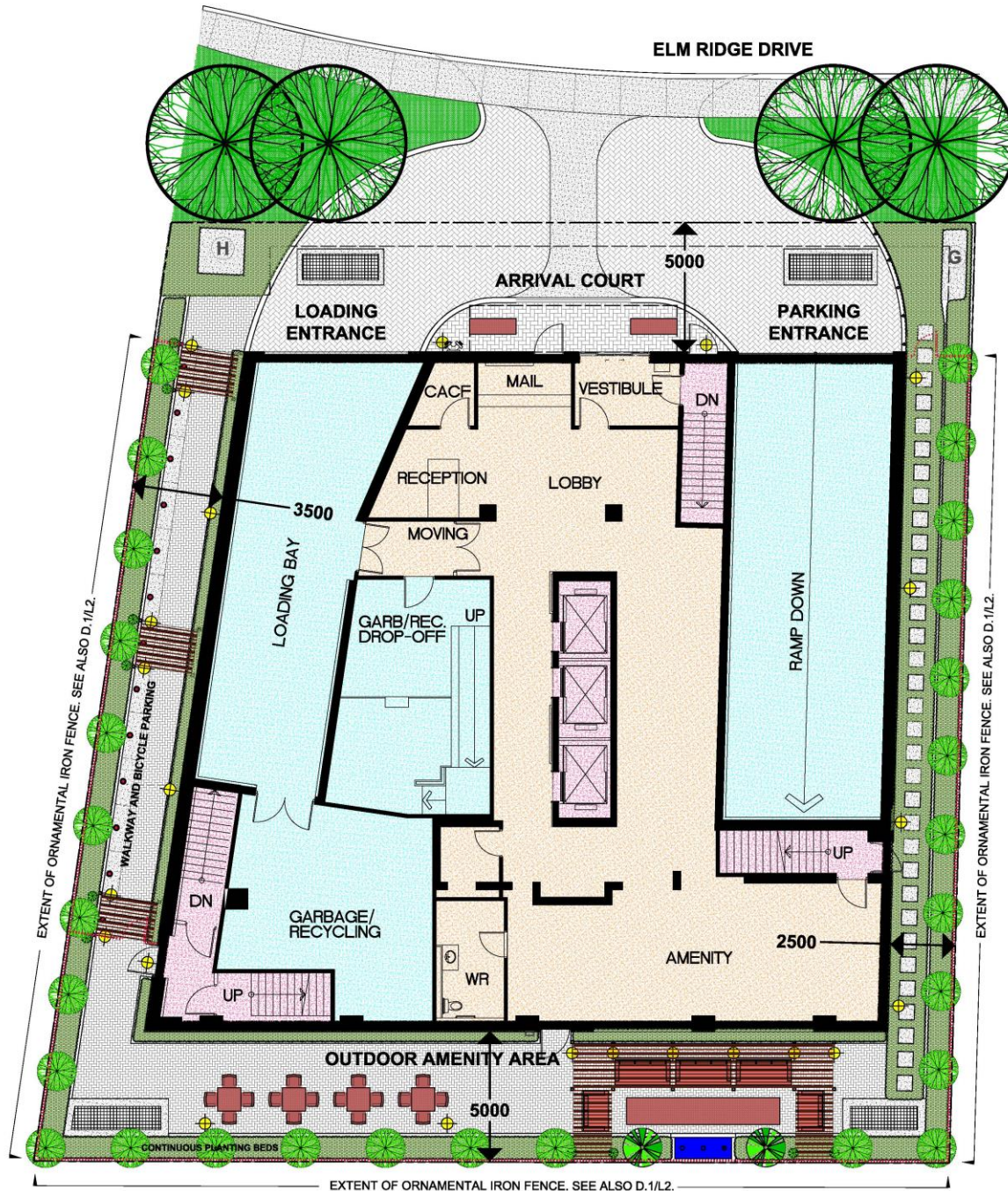
Outdoor Amenity Space  212 m²

Bicycle Parking  **50 Spaces**
12 Short-term spaces
38 long term Spaces

Vehicular Parking  **37 Spaces**



Site Plan



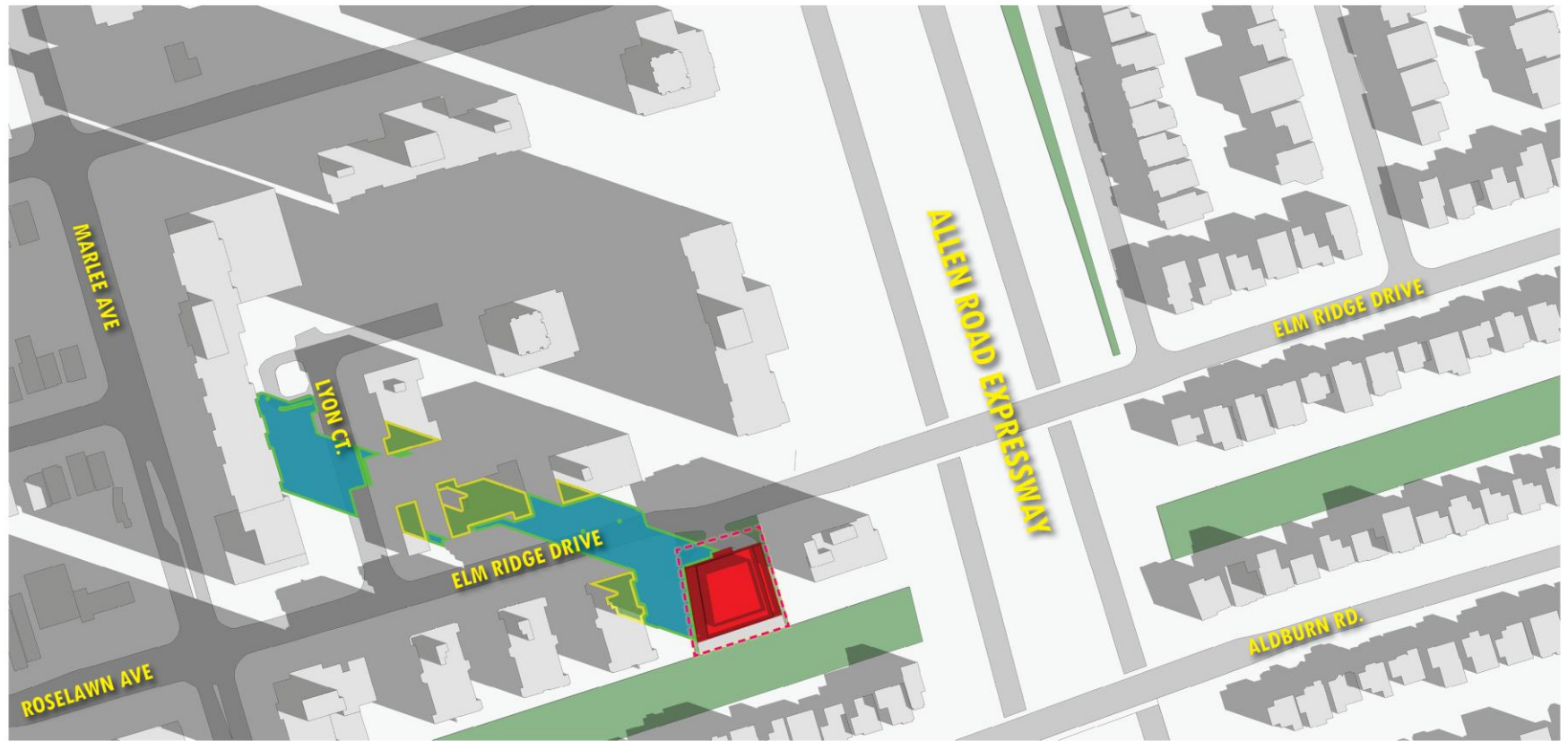
Ground Floor Plan

Q&A



Shadow Study





RICHMOND Architects Ltd.

55 EGLINTON AVENUE EAST
SUITE 802
TORONTO, ON M4P 1G8

T: 416 961 1567

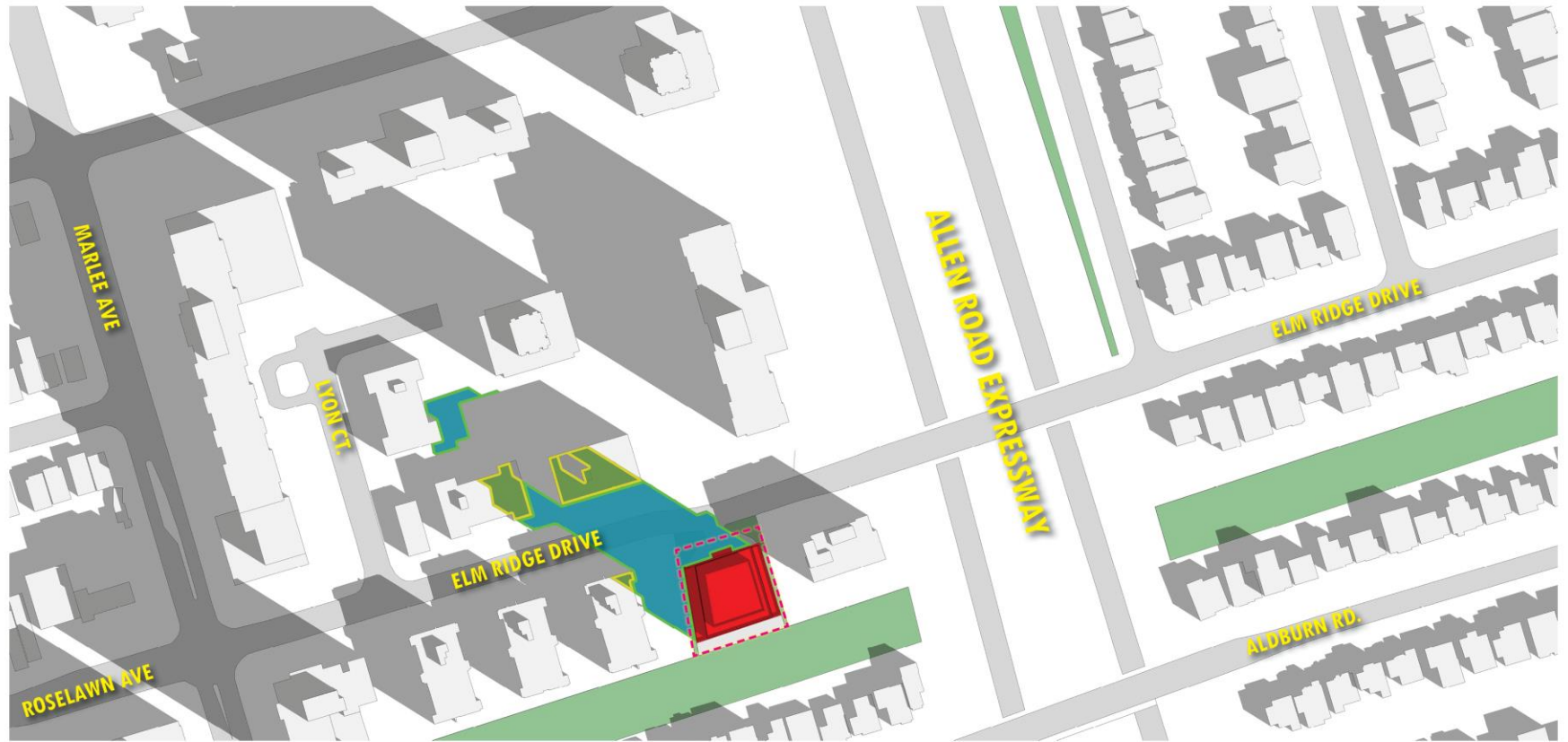
RICHMONDARCH.COM

- ADDITIONAL SHADOW ON GROUND
- ADDITIONAL SHADOW ON ROOFS
- SITE BOUNDARY

MARCH 21, 9:18 AM

SUN / SHADOW STUDY





RICHMOND | Architects Ltd.

65 EGLINTON AVENUE EAST
SUITE 802
TORONTO, ON M4P 1G8

T: 416 961 1567
RICHMONDARCH.COM

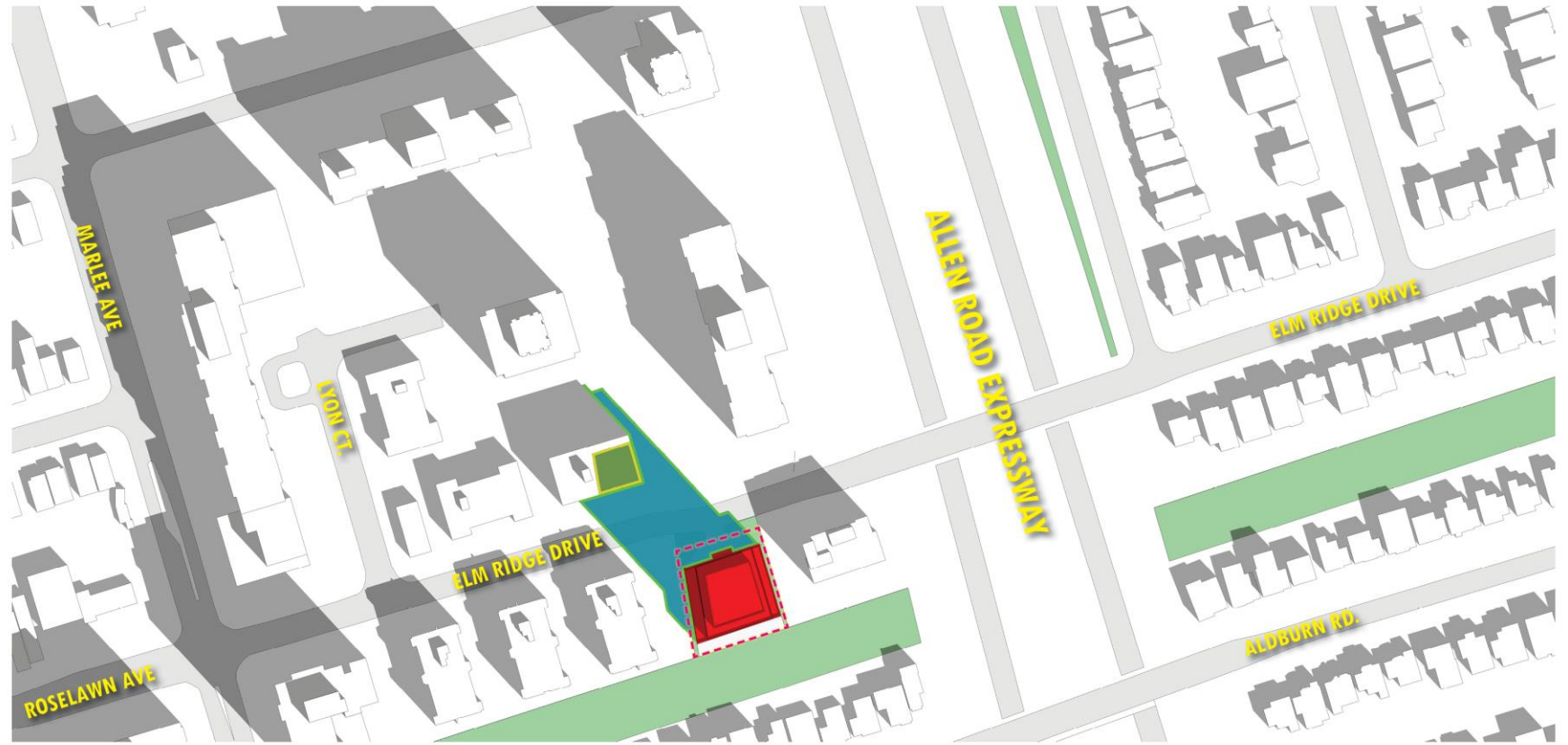
- ADDITIONAL SHADOW ON GROUND
- ADDITIONAL SHADOW ON ROOFS
- SITE BOUNDARY

MARCH 21, 10:18 AM

SUN / SHADOW STUDY



155 ELM RIDGE, TORONTO, CITY OF TORONTO



RICHMOND | Architects Ltd.

55 EGLINTON AVENUE EAST
SUITE 802
TORONTO, ON M4P 1G8

T. 416 961 1567
RICHMONDARCH.COM

- ADDITIONAL SHADOW ON GROUND
- ADDITIONAL SHADOW ON ROOFS
- SITE BOUNDARY

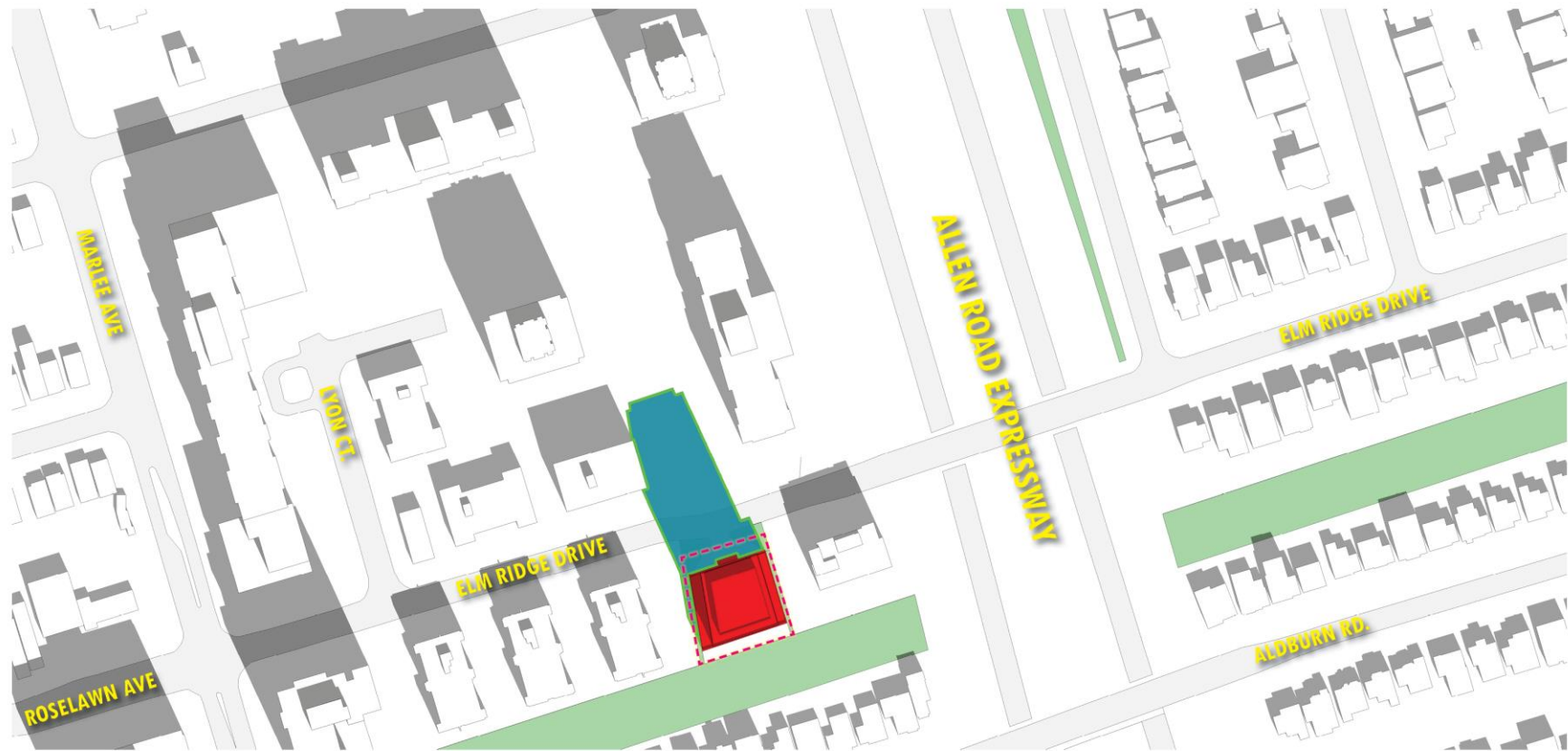
MARCH 21, 11:18 AM

SUN / SHADOW STUDY



5

155 ELM RIDGE, TORONTO, CITY OF TORONTO



RICHMOND | Architects Ltd.

55 EGLINTON AVENUE EAST
SUITE 802
TORONTO, ON M4P 1G8

T. 416-961-1567
RICHMONDARCH.COM

- ADDITIONAL SHADOW ON GROUND
- ADDITIONAL SHADOW ON ROOFS
- SITE BOUNDARY

MARCH 21, 12:18 PM

SUN / SHADOW STUDY



155 ELM RIDGE, TORONTO, CITY OF TORONTO



RICHMOND Architects Ltd.

55 EGLINTON AVENUE EAST
SUITE 802
TORONTO, ON M4P 1G8

T. 416 961 1567

RICHMONDARCH.COM

ADDITIONAL SHADOW ON GROUND

ADDITIONAL SHADOW ON ROOFS

SITE BOUNDARY

MARCH 21, 1:18 PM

SUN / SHADOW STUDY



155 ELM RIDGE, TORONTO, CITY OF TORONTO



RICHMOND | Architects Ltd.

55 EGLINTON AVENUE EAST
SUITE 802
TORONTO, ON M4P 1G8

T. 416 961 1567

RICHMONDARCH.COM

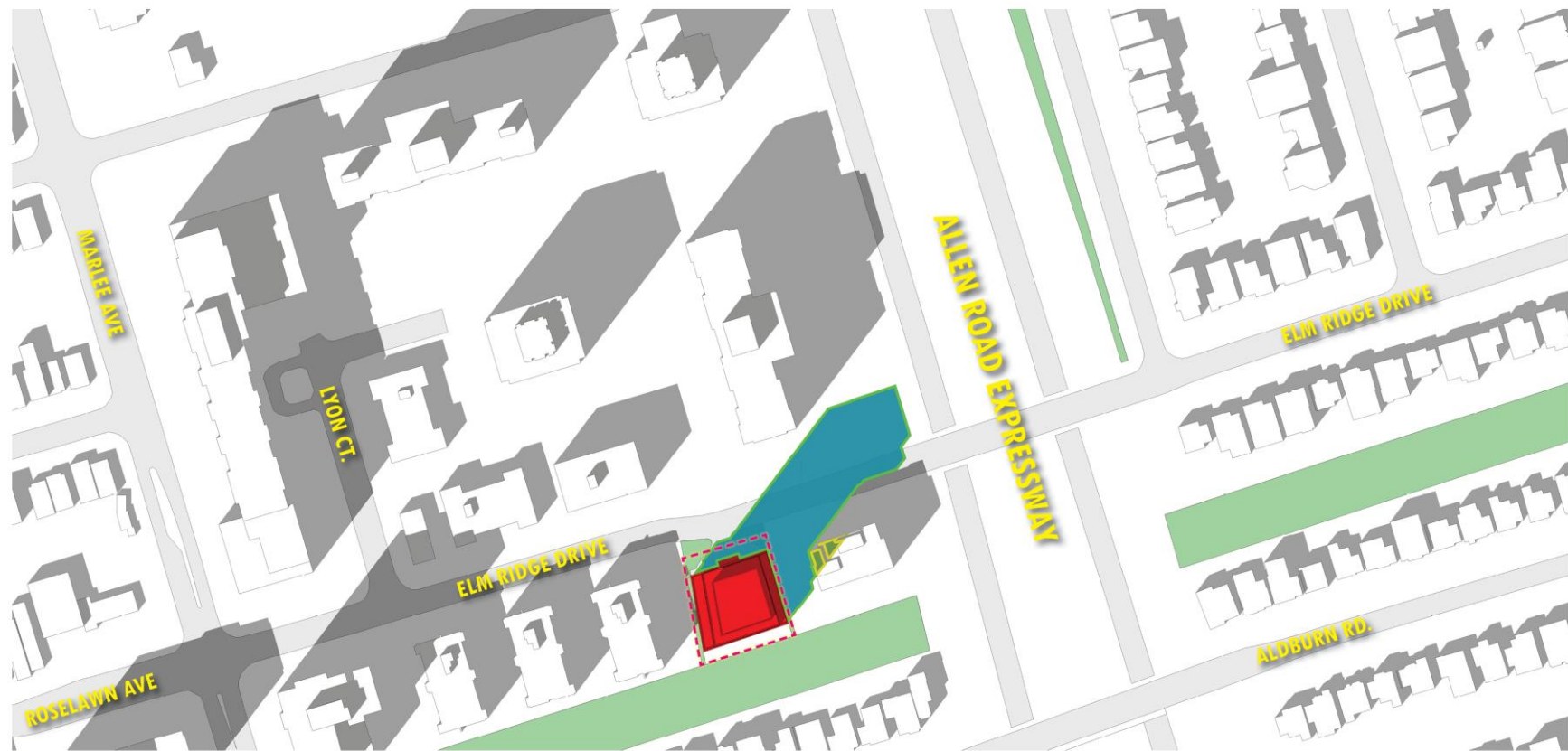
- ADDITIONAL SHADOW ON GROUND
- ADDITIONAL SHADOW ON ROOFS
- SITE BOUNDARY

MARCH 21, 2:18 PM

SUN / SHADOW STUDY



155 ELM RIDGE, TORONTO, CITY OF TORONTO



RICHMOND | Architects Ltd.

55 EGLINTON AVENUE EAST
SUITE 802
TORONTO, ON M4P 1G8

T: 416 961 1567

RICHMONDARCH.COM

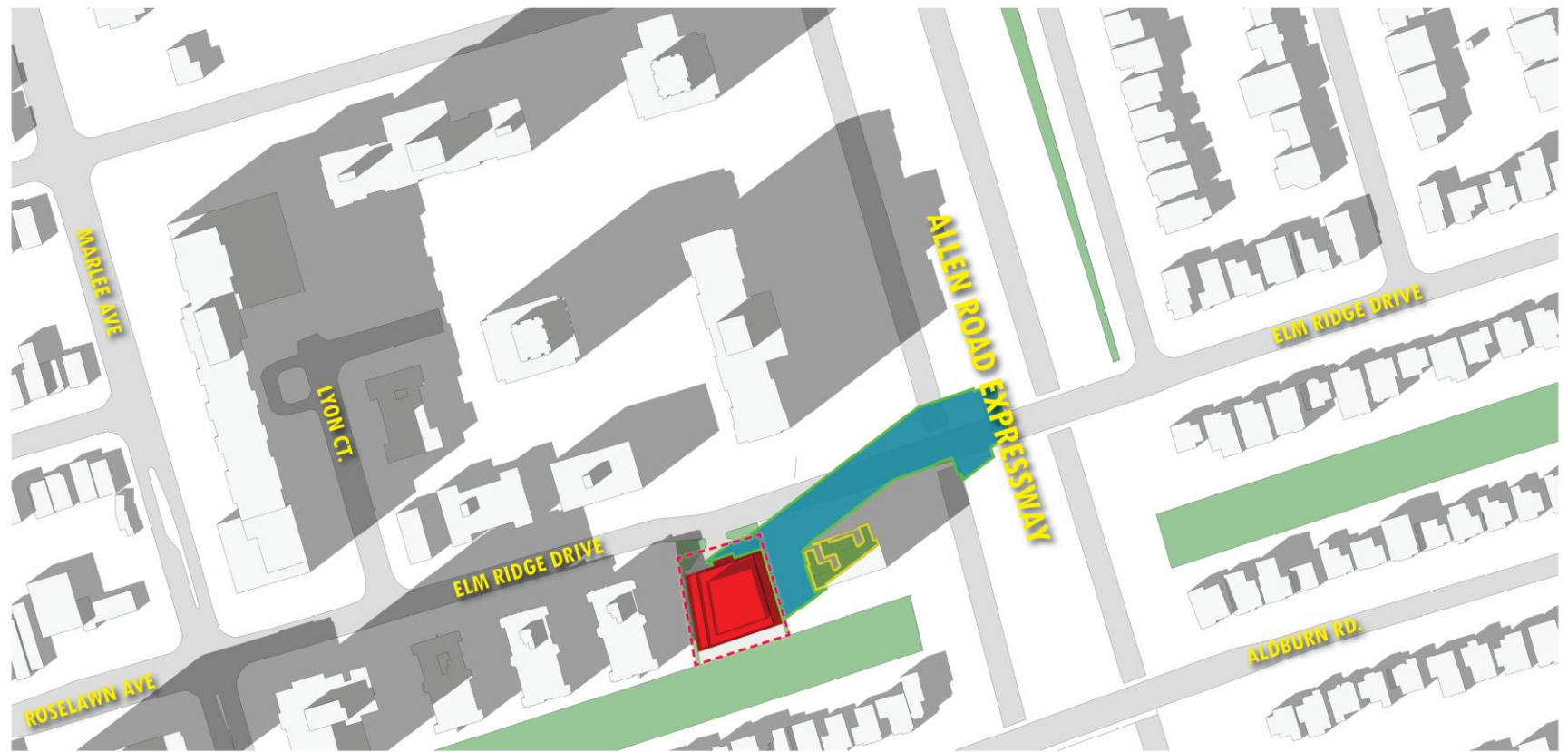
- ADDITIONAL SHADOW ON GROUND
- ADDITIONAL SHADOW ON ROOFS
- SITE BOUNDARY

MARCH 21, 3:18 PM

SUN / SHADOW STUDY



155 ELM RIDGE, TORONTO, CITY OF TORONTO



RICHMOND | Architects Ltd.

65 EGLINTON AVENUE EAST
SUITE 902
TORONTO, ON M4P 1G8

T. 416 961 1567

RICHMONDARCH.COM

- ADDITIONAL SHADOW ON GROUND
- ADDITIONAL SHADOW ON ROOFS
- SITE BOUNDARY

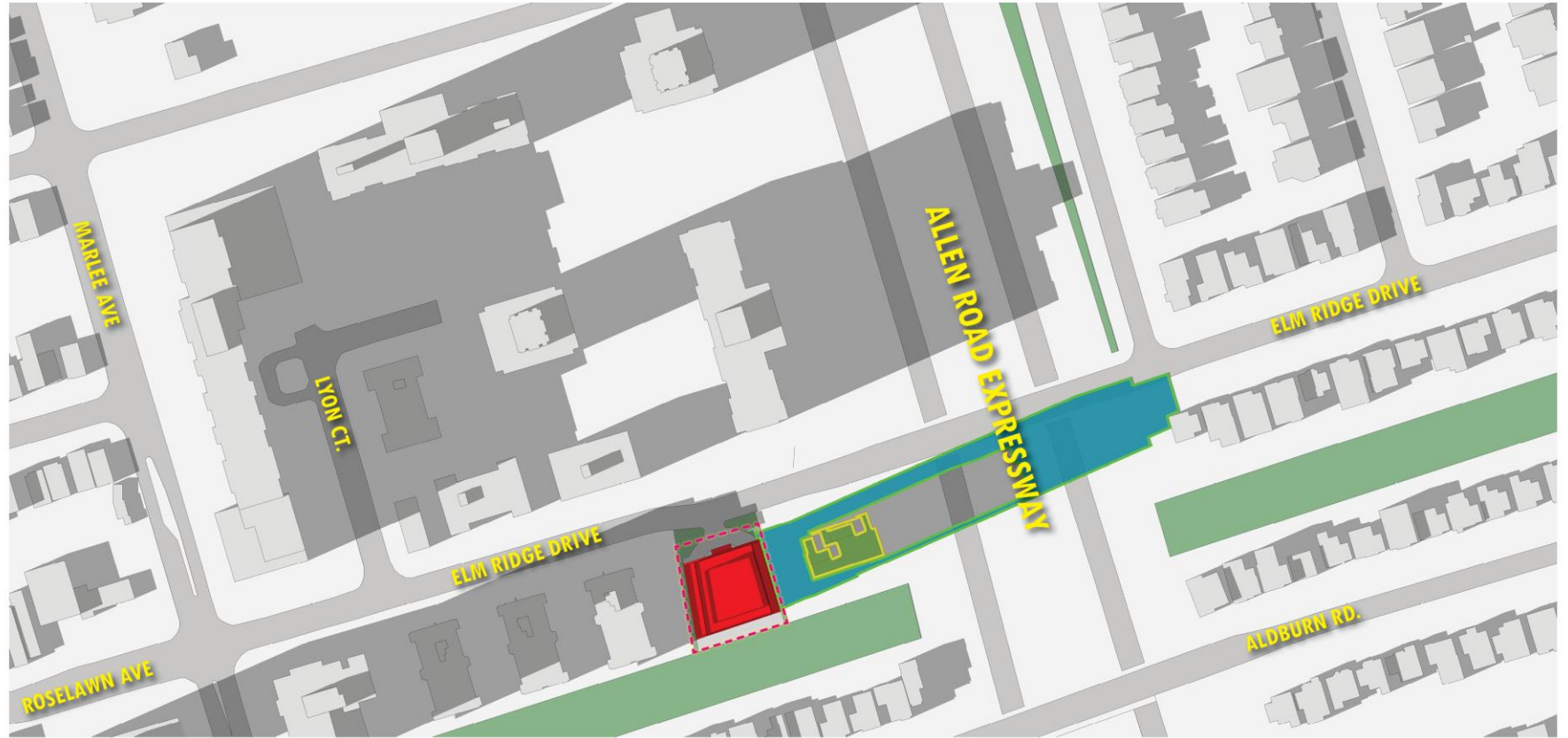
MARCH 21, 4:18 PM

SUN / SHADOW STUDY



10

155 ELM RIDGE, TORONTO, CITY OF TORONTO



RICHMOND Architects Ltd.

55 EGLINTON AVENUE EAST
SUITE 802
TORONTO, ON M4P 1G8

T: 416 961 1567

RICHMONDARCH.COM

- ADDITIONAL SHADOW ON GROUND
- ADDITIONAL SHADOW ON ROOFS
- SITE BOUNDARY

MARCH 21, 5:18 PM

SUN / SHADOW STUDY



11

155 ELM RIDGE, TORONTO, CITY OF TORONTO



RICHMOND Architects Ltd.

55 EGLINTON AVENUE EAST
SUITE 802
TORONTO, ON M4P 1G8

T: 416 961 1567
RICHMONDARCH.COM

- ADDITIONAL SHADOW ON GROUND
- ADDITIONAL SHADOW ON ROOFS
- SITE BOUNDARY

MARCH 21, 6:18 PM

SUN / SHADOW STUDY



12

155 ELM RIDGE, TORONTO, CITY OF TORONTO



RICHMOND | Architects Ltd.

55 EGLINTON AVENUE EAST
SUITE 802
TORONTO, ON M4P 1G8

T: 416 961 1567

RICHMONDARCH.COM

- ADDITIONAL SHADOW ON GROUND
- ADDITIONAL SHADOW ON ROOFS
- SITE BOUNDARY

JUNE 21, 9:18 AM

SUN / SHADOW STUDY



13

155 ELM RIDGE, TORONTO, CITY OF TORONTO



RICHMOND | Architects Ltd.

55 EGLINTON AVENUE EAST
SUITE 802
TORONTO, ON M4P 1G8

T. 416 961 1567

RICHMONDARCH.COM

- ADDITIONAL SHADOW ON GROUND
- ADDITIONAL SHADOW ON ROOFS
- SITE BOUNDARY

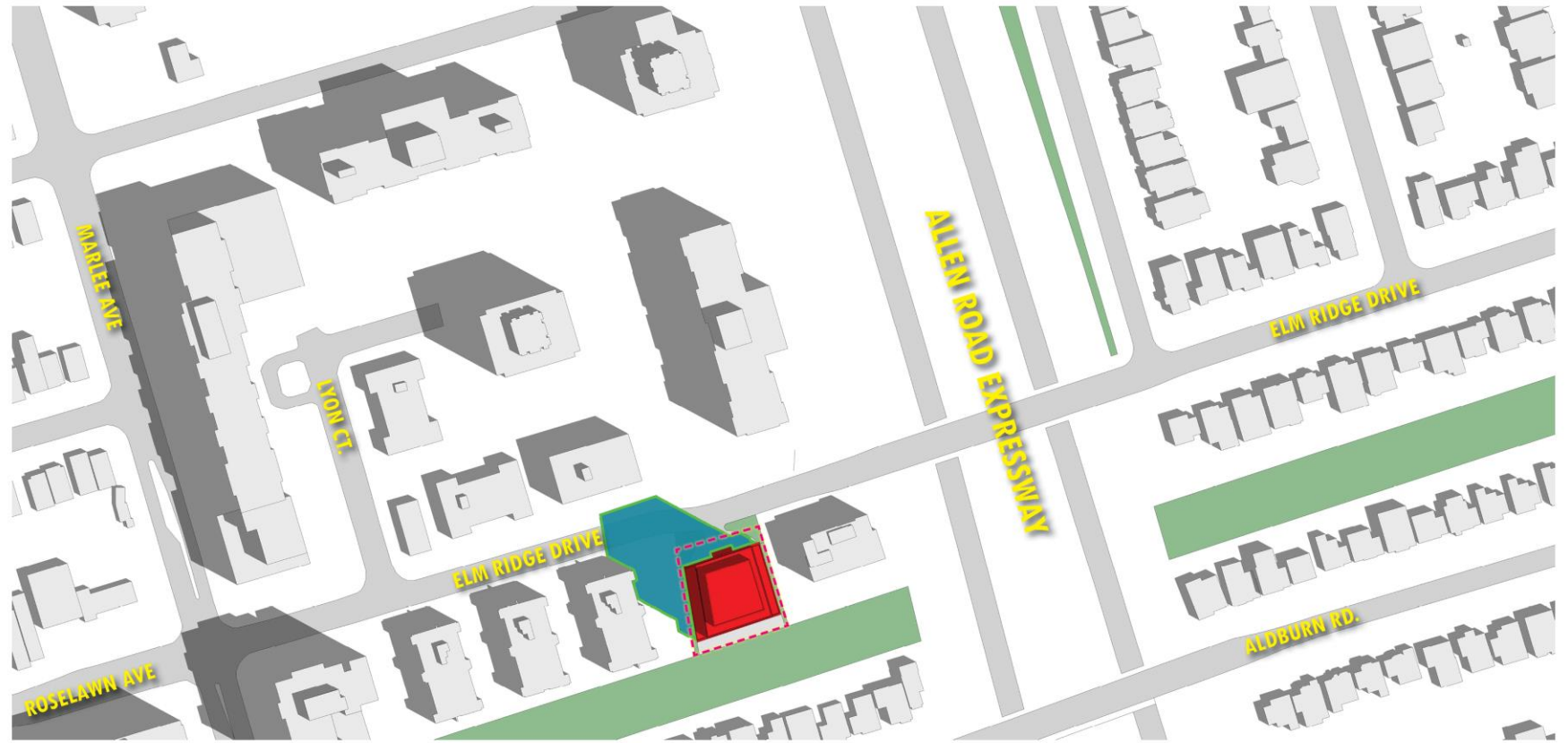
JUNE 21, 10:18 AM

SUN / SHADOW STUDY



14

155 ELM RIDGE, TORONTO, CITY OF TORONTO



RICHMOND | Architects Ltd.

65 EGLINTON AVENUE EAST
SUITE 802
TORONTO, ON M4P 1G8

T: 416 961 1567
RICHMONDARCH.COM

- ADDITIONAL SHADOW ON GROUND
- ADDITIONAL SHADOW ON ROOFS
- SITE BOUNDARY

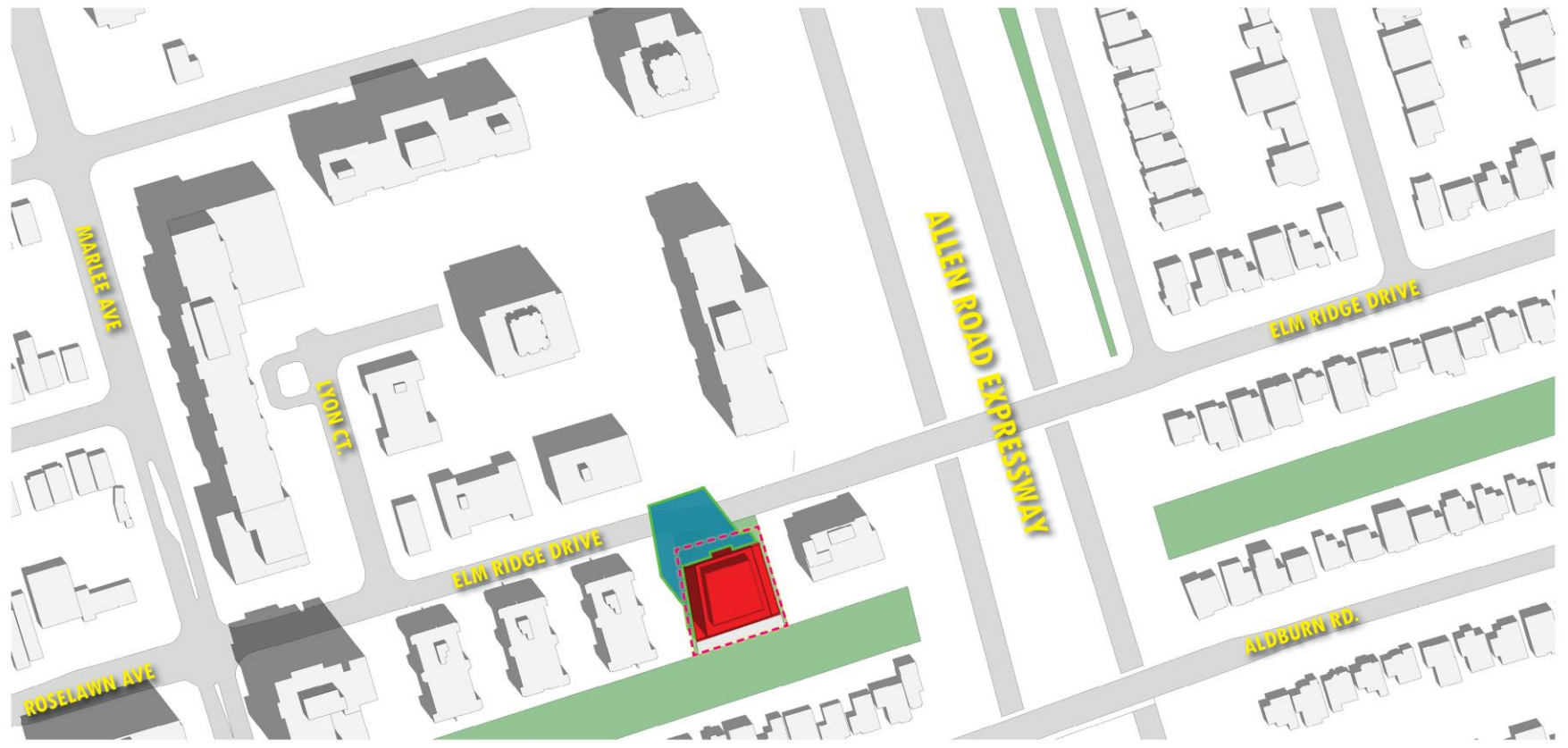
JUNE 21, 11:18 AM

SUN / SHADOW STUDY



15

155 ELM RIDGE, TORONTO, CITY OF TORONTO



RICHMOND | Architects Ltd.

65 EGLINTON AVENUE EAST
SUITE 802
TORONTO, ON M4P 1G8

T: 416 961 1567
RICHMONDARCH.COM

- ADDITIONAL SHADOW ON GROUND
- ADDITIONAL SHADOW ON ROOFS
- SITE BOUNDARY

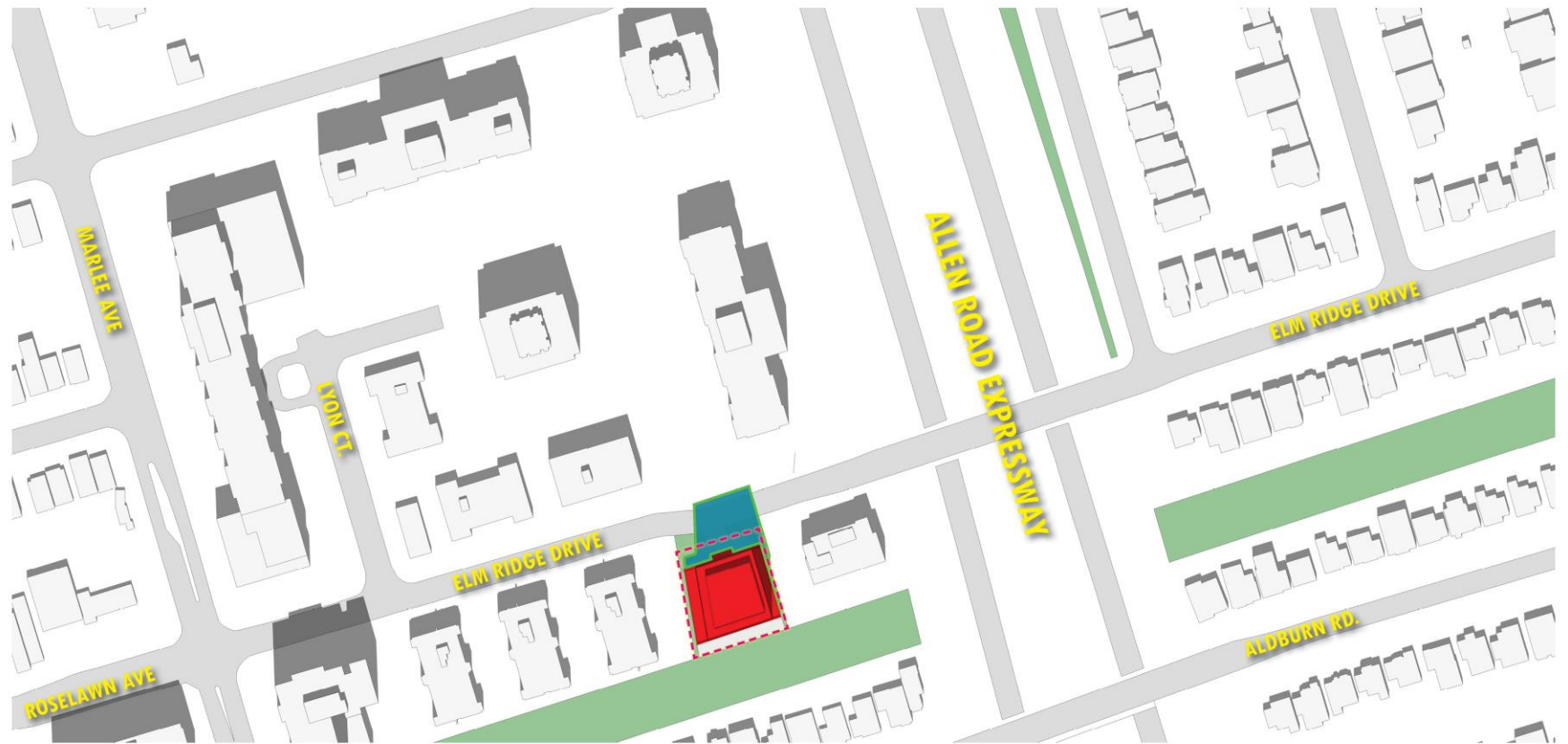
JUNE 21, 12:18 PM

SUN / SHADOW STUDY



16

155 ELM RIDGE, TORONTO, CITY OF TORONTO



RICHMOND | Architects Ltd.

55 EGLINTON AVENUE EAST
SUITE 802
TORONTO, ON M4P 1G8

T. 416 961 1567

RICHMONDARCH.COM

- ADDITIONAL SHADOW ON GROUND
- ADDITIONAL SHADOW ON ROOFS
- SITE BOUNDARY

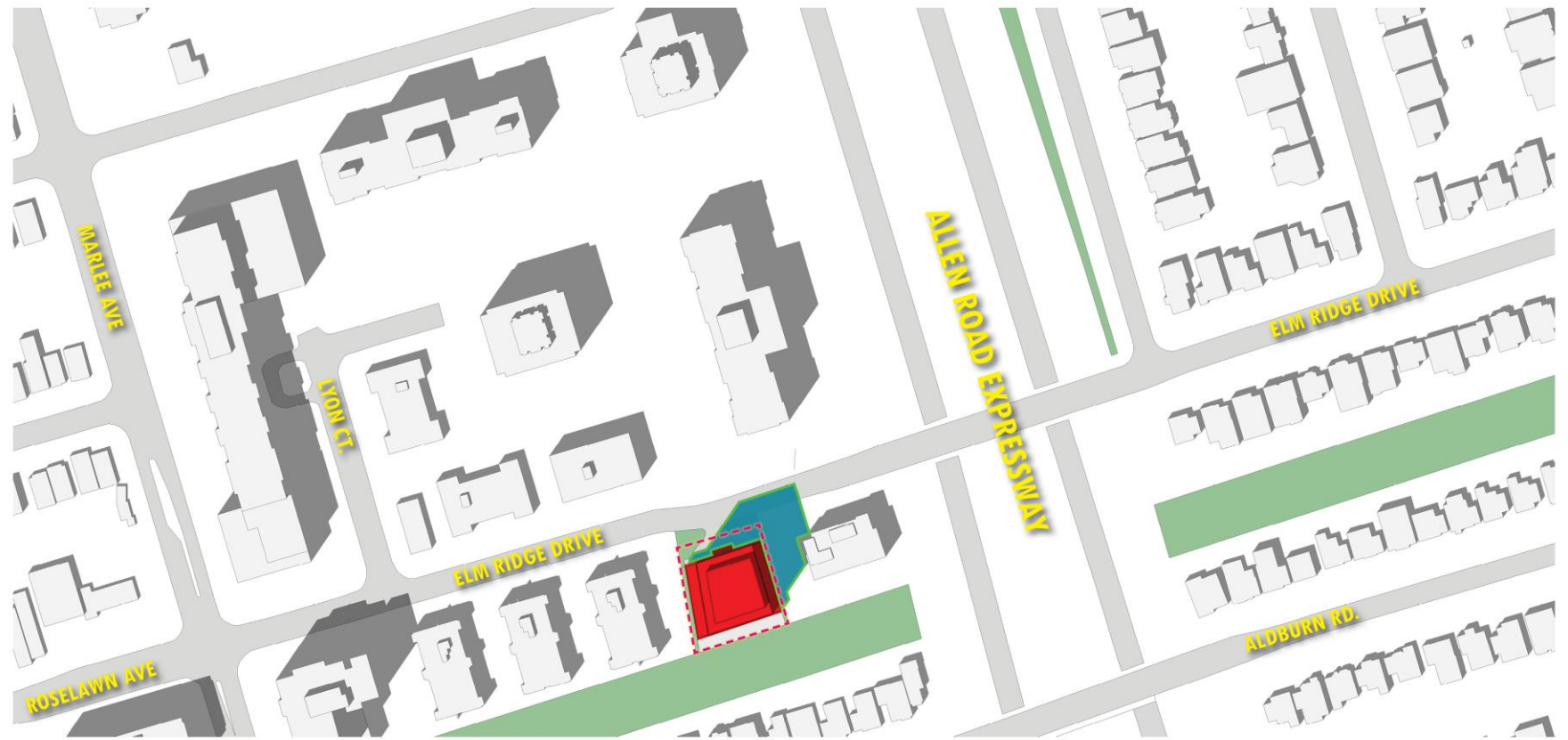
JUNE 21, 1:18 PM

SUN / SHADOW STUDY



17

155 ELM RIDGE, TORONTO, CITY OF TORONTO



RICHMOND | Architects Ltd.

55 EGLINTON AVENUE EAST
SUITE 802
TORONTO, ON M4P 1G8

T: 416 961 1567
RICHMONDARCH.COM

- ADDITIONAL SHADOW ON GROUND
- ADDITIONAL SHADOW ON ROOFS
- SITE BOUNDARY

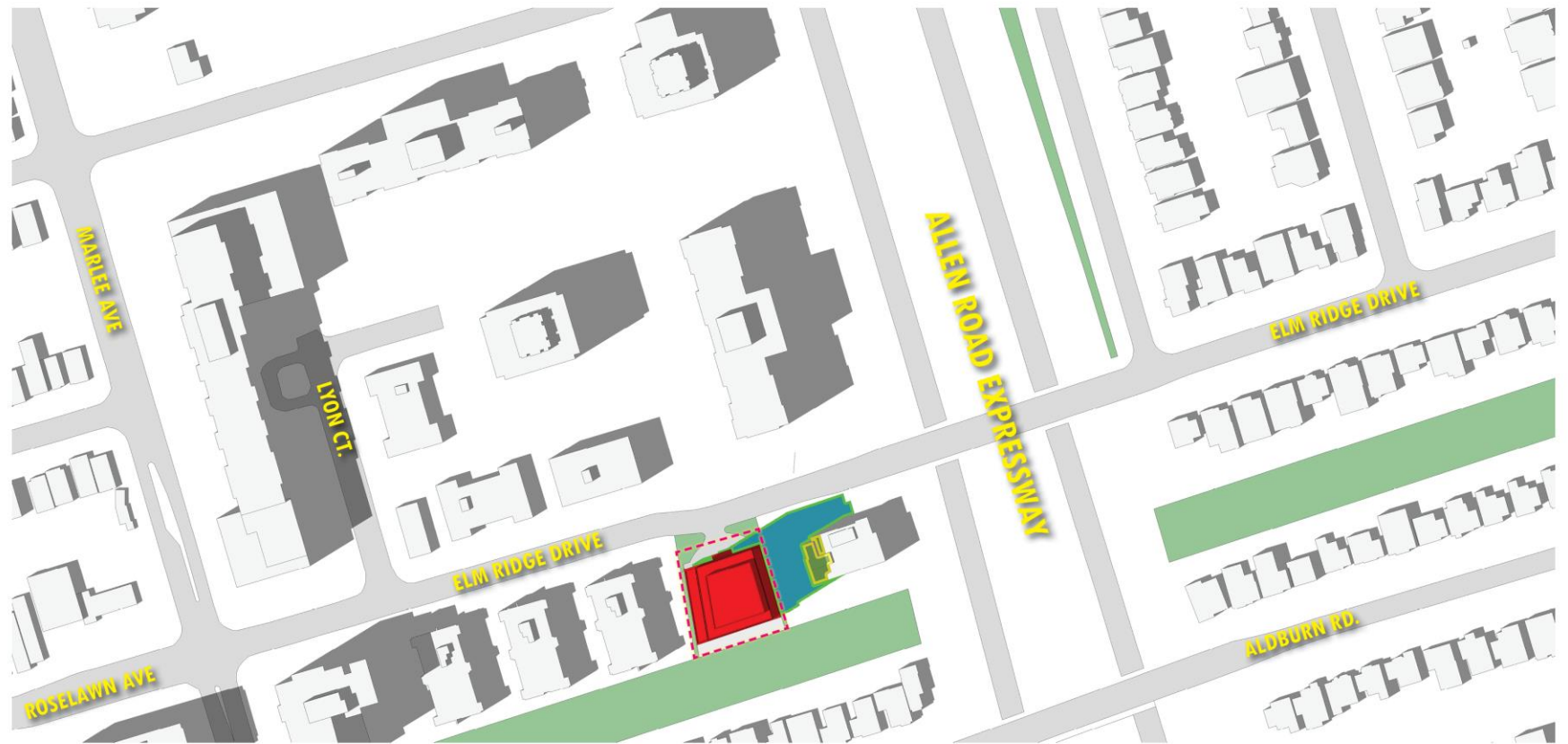
JUNE 21, 2:18 PM

SUN / SHADOW STUDY



18

155 ELM RIDGE, TORONTO, CITY OF TORONTO



RICHMOND | Architects Ltd.

55 EGLINTON AVENUE EAST
SUITE 802
TORONTO, ON M4P 1G8

T. 416 961 1567

RICHMONDARCH.COM

- ADDITIONAL SHADOW ON GROUND
- ADDITIONAL SHADOW ON ROOFS
- SITE BOUNDARY

JUNE 21, 3:18 PM

SUN / SHADOW STUDY



155 ELM RIDGE, TORONTO, CITY OF TORONTO



RICHMOND Architects Ltd.

55 EGLINTON AVENUE EAST
SUITE 802
TORONTO, ON M4P 1G8

T: 416 961 1567

RICHMONDARCH.COM

- ADDITIONAL SHADOW ON GROUND
- ADDITIONAL SHADOW ON ROOFS
- SITE BOUNDARY

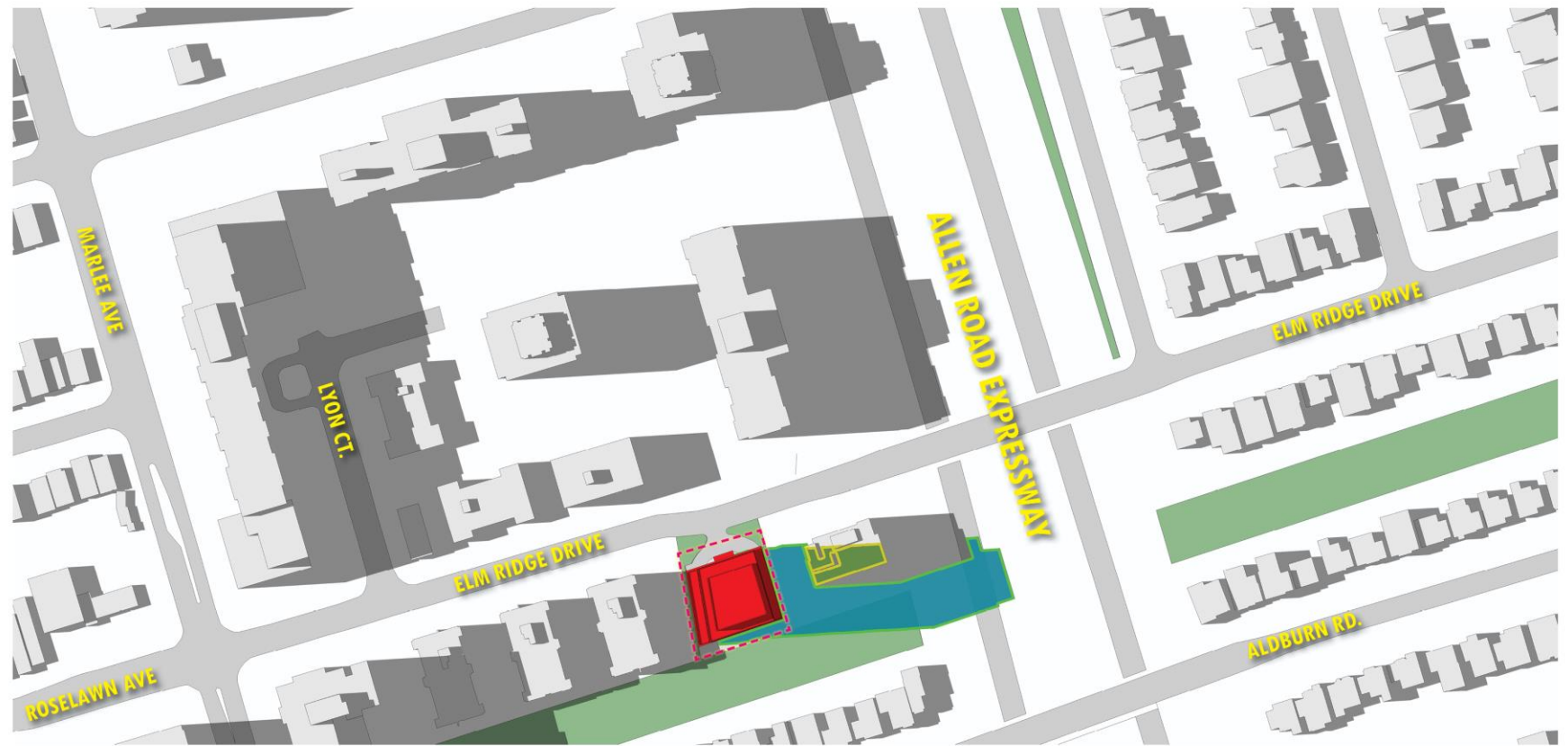
JUNE 21, 4:18 PM

SUN / SHADOW STUDY



20

155 ELM RIDGE, TORONTO, CITY OF TORONTO



RICHMOND Architects Ltd.

55 EGLINTON AVENUE EAST
SUITE 802
TORONTO, ON M4P 1G8

T. 416 961 1567

RICHMONDARCH.COM

- ADDITIONAL SHADOW ON GROUND
- ADDITIONAL SHADOW ON ROOFS
- SITE BOUNDARY

JUNE 21, 5:18 PM

SUN / SHADOW STUDY



21

155 ELM RIDGE, TORONTO, CITY OF TORONTO



RICHMOND | Architects Ltd.

65 EGLINTON AVENUE EAST
SUITE 802
TORONTO, ON M4P 1G8

T. 416 961 1567
RICHMONDARCH.COM

- ADDITIONAL SHADOW ON GROUND
- ADDITIONAL SHADOW ON ROOFS
- SITE BOUNDARY

JUNE 21, 6:18 PM

SUN / SHADOW STUDY



22

155 ELM RIDGE, TORONTO, CITY OF TORONTO



RICHMOND | Architects Ltd.

55 EGLINTON AVENUE EAST
SUITE 802
TORONTO, ON M4P 1G8

T. 416 961 1567
RICHMONDARCH.COM

- ADDITIONAL SHADOW ON GROUND
- ADDITIONAL SHADOW ON ROOFS
- SITE BOUNDARY

SEPTEMBER 21, 9:18 AM

SUN / SHADOW STUDY

155 ELM RIDGE, TORONTO, CITY OF TORONTO





RICHMOND | Architects Ltd.

65 EGLINTON AVENUE EAST
SUITE 802
TORONTO, ON M4P 1G8

T. 416 961 1567
RICHMONDARCH.COM

- ADDITIONAL SHADOW ON GROUND
- ADDITIONAL SHADOW ON ROOFS
- SITE BOUNDARY

SEPTEMBER 21, 10:18 AM

SUN / SHADOW STUDY

155 ELM RIDGE, TORONTO, CITY OF TORONTO





RICHMOND Architects Ltd.

55 EGLINTON AVENUE EAST
SUITE 802
TORONTO, ON M4P 1G8

T: 416 961 1567

RICHMONDARCH.COM

ADDITIONAL SHADOW ON GROUND

ADDITIONAL SHADOW ON ROOFS

SITE BOUNDARY

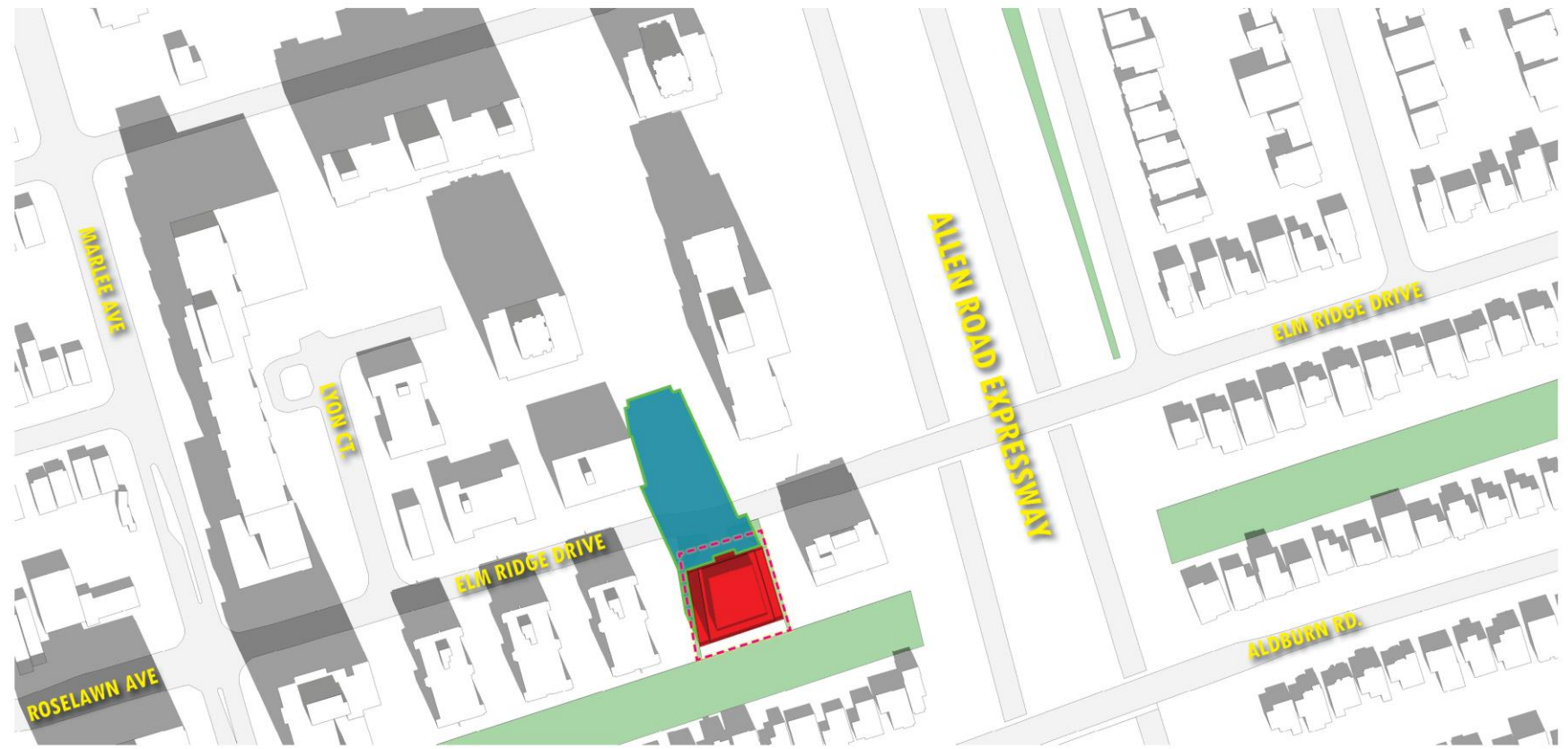
SEPTEMBER 21, 11:18 AM

SUN / SHADOW STUDY

155 ELM RIDGE, TORONTO, CITY OF TORONTO



25



RICHMOND | Architects Ltd.

55 EGLINTON AVENUE EAST
SUITE 802
TORONTO, ON M4P 1G8

T. 416 961 1567

RICHMONDARCH.COM

- ADDITIONAL SHADOW ON GROUND
- ADDITIONAL SHADOW ON ROOFS
- SITE BOUNDARY

SEPTEMBER 21, 12:18 PM

SUN / SHADOW STUDY

155 ELM RIDGE, TORONTO, CITY OF TORONTO





RICHMOND Architects Ltd.

55 EGLINTON AVENUE EAST
SUITE 802
TORONTO, ON M4P 1G8

T: 416 961 1567

RICHMONDARCH.COM

- ADDITIONAL SHADOW ON GROUND
- ADDITIONAL SHADOW ON ROOFS
- SITE BOUNDARY

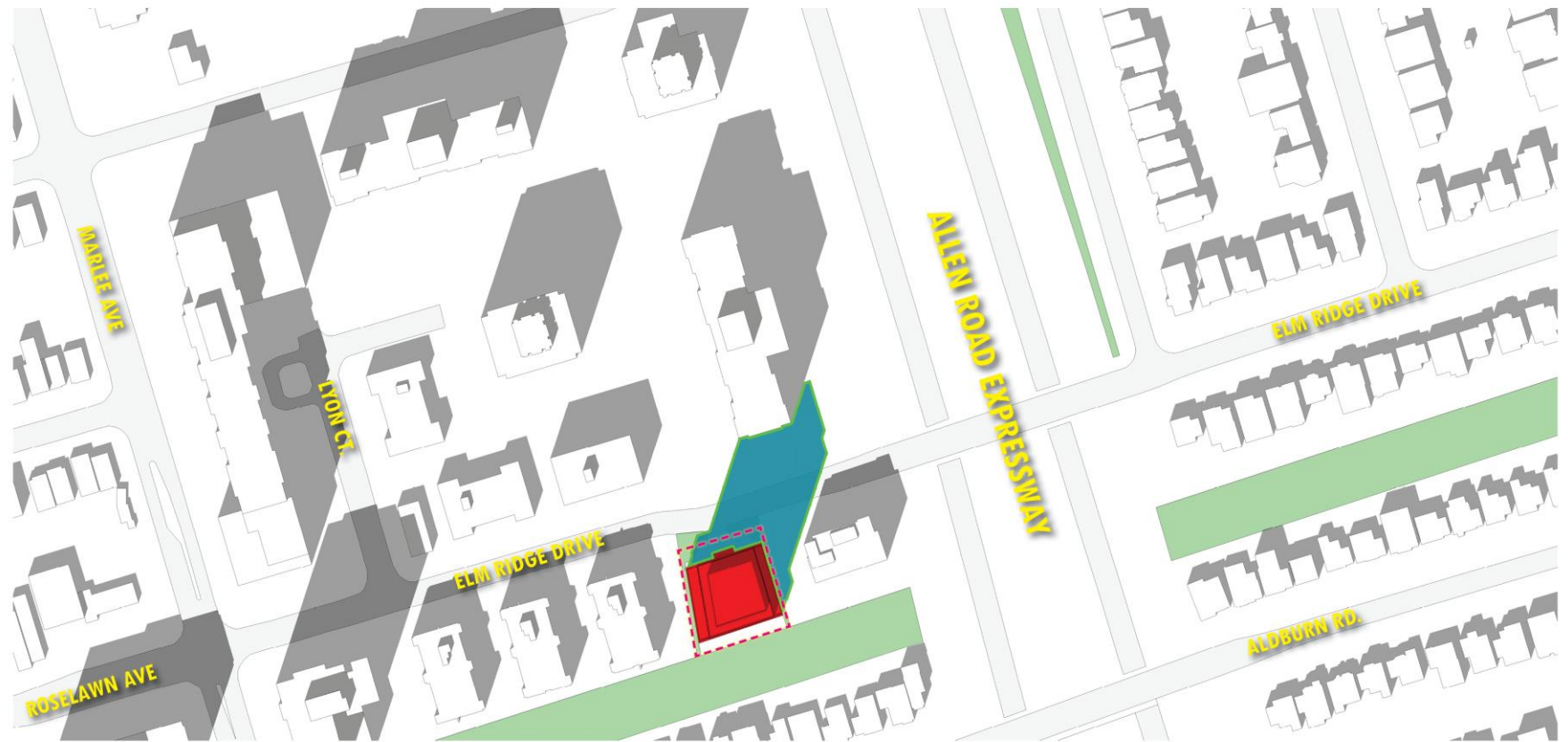
SEPTEMBER 21, 1:18 PM

SUN / SHADOW STUDY



27

155 ELM RIDGE, TORONTO, CITY OF TORONTO



RICHMOND Architects Ltd.

55 EGLINTON AVENUE EAST
SUITE 802
TORONTO, ON M4P 1G8

T: 416 961 1567
RICHMONDARCH.COM

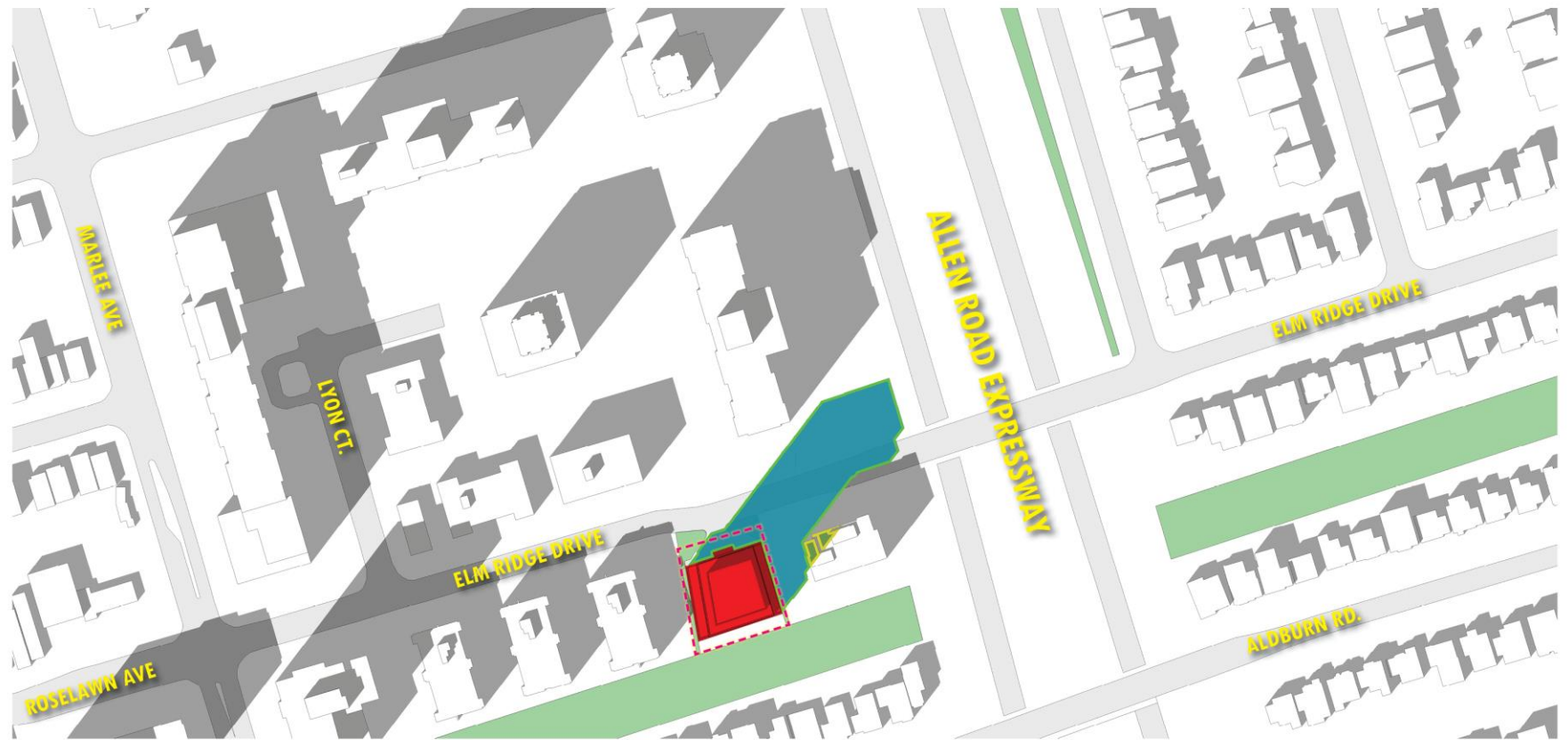
- ADDITIONAL SHADOW ON GROUND
- ADDITIONAL SHADOW ON ROOFS
- SITE BOUNDARY

SEPTEMBER 21, 2:18 PM

SUN / SHADOW STUDY

155 ELM RIDGE, TORONTO, CITY OF TORONTO





RICHMOND | Architects Ltd.

55 EGLINTON AVENUE EAST
 SUITE 802
 TORONTO, ON M4P 1G8

T: 416 961 1567

RICHMONDARCH.COM

- ADDITIONAL SHADOW ON GROUND
- ADDITIONAL SHADOW ON ROOFS
- SITE BOUNDARY

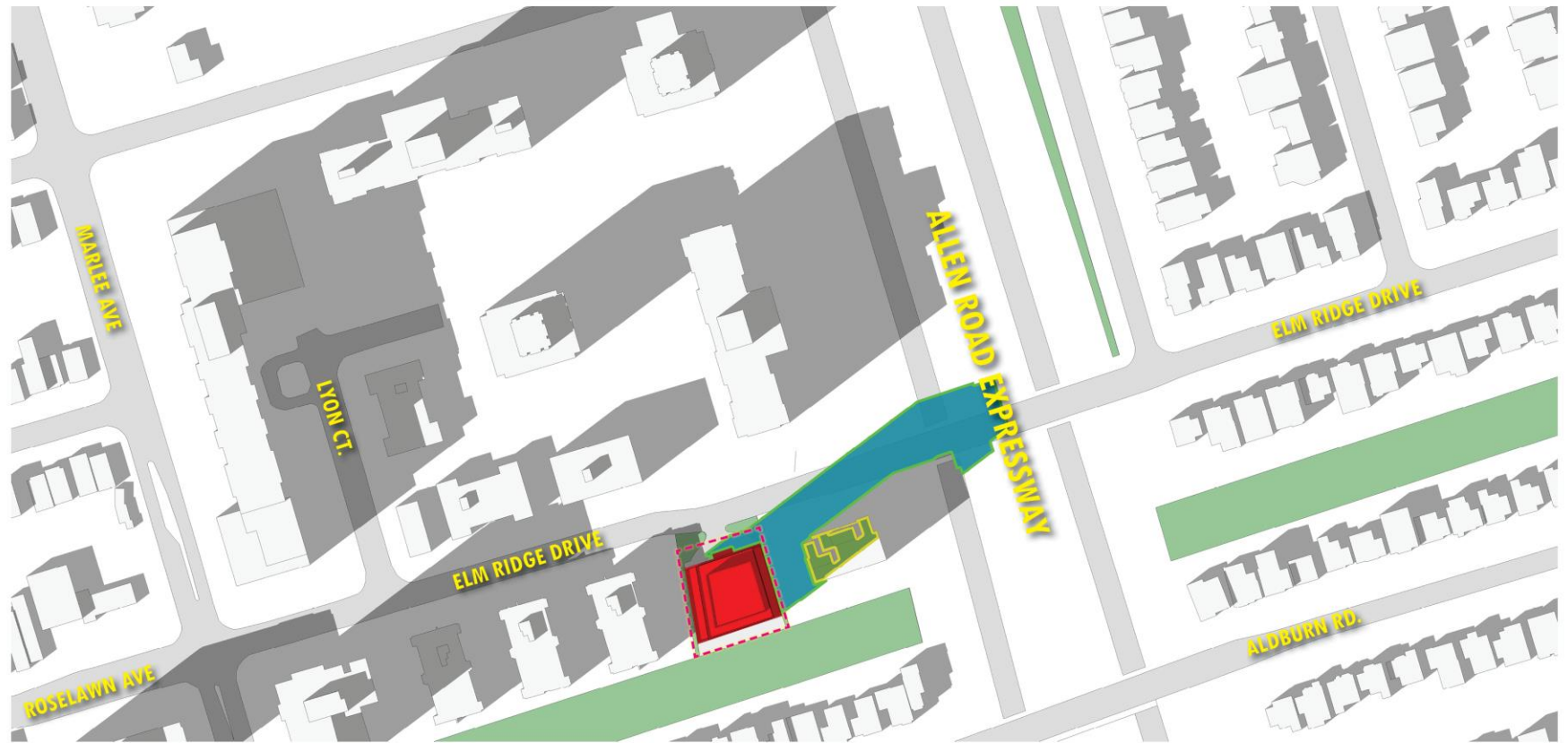
SEPTEMBER 21, 3:18 PM

SUN / SHADOW STUDY



29

155 ELM RIDGE, TORONTO, CITY OF TORONTO



RICHMOND | Architects Ltd.

65 EGLINTON AVENUE EAST
SUITE 802
TORONTO, ON M4P 1G8

T. 416 961 1567
RICHMONDARCH.COM

- ADDITIONAL SHADOW ON GROUND
- ADDITIONAL SHADOW ON ROOFS
- SITE BOUNDARY

SEPTEMBER 21, 4:18 PM

SUN / SHADOW STUDY

155 ELM RIDGE, TORONTO, CITY OF TORONTO



30



RICHMOND Architects Ltd.

55 EGLINTON AVENUE EAST
SUITE 802
TORONTO, ON M4P 1G8

T: 416 961 1567
RICHMONDARCH.COM

- ADDITIONAL SHADOW ON GROUND
- ADDITIONAL SHADOW ON ROOFS
- SITE BOUNDARY

SEPTEMBER 21, 6:18 PM

SUN / SHADOW STUDY

155 ELM RIDGE, TORONTO, CITY OF TORONTO





RICHMOND | Architects Ltd.

55 EGLINTON AVENUE EAST
SUITE 802
TORONTO, ON M4P 1G8

T: 416 961 1567
RICHMONDARCH.COM

- ADDITIONAL SHADOW ON GROUND
- ADDITIONAL SHADOW ON ROOFS
- SITE BOUNDARY

DECEMBER 21, 9:18 AM

SUN / SHADOW STUDY



33

155 ELM RIDGE, TORONTO, CITY OF TORONTO



RICHMOND Architects Ltd.

55 EGLINTON AVENUE EAST
SUITE 802
TORONTO, ON M4P 1G8

T: 416 961 1567
RICHMONDARCH.COM

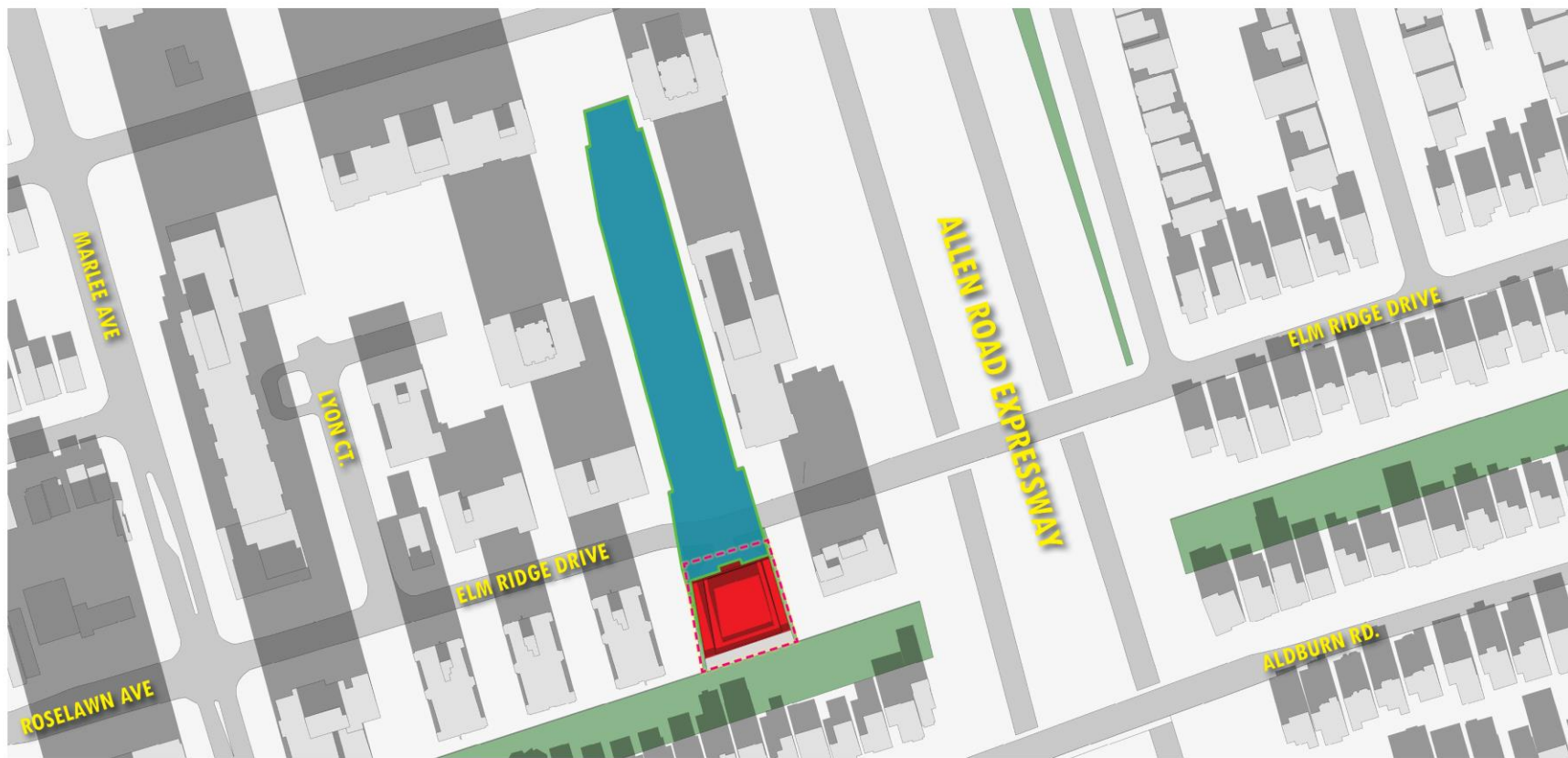
- ADDITIONAL SHADOW ON GROUND
- ADDITIONAL SHADOW ON ROOFS
- SITE BOUNDARY

DECEMBER 21, 10:18 AM

SUN / SHADOW STUDY

155 ELM RIDGE, TORONTO, CITY OF TORONTO





RICHMOND | Architects Ltd.

55 EGLINTON AVENUE EAST
SUITE 802
TORONTO, ON M4P 1G8

T. 416 961 1567
RICHMONDARCH.COM

- ADDITIONAL SHADOW ON GROUND
- ADDITIONAL SHADOW ON ROOFS
- SITE BOUNDARY

DECEMBER 21, 11:18 AM

SUN / SHADOW STUDY

155 ELM RIDGE, TORONTO, CITY OF TORONTO





RICHMOND | Architects Ltd.

55 EGLINTON AVENUE EAST
SUITE 802
TORONTO, ON M4P 1G8

T. 416 961 1567

RICHMONDARCH.COM

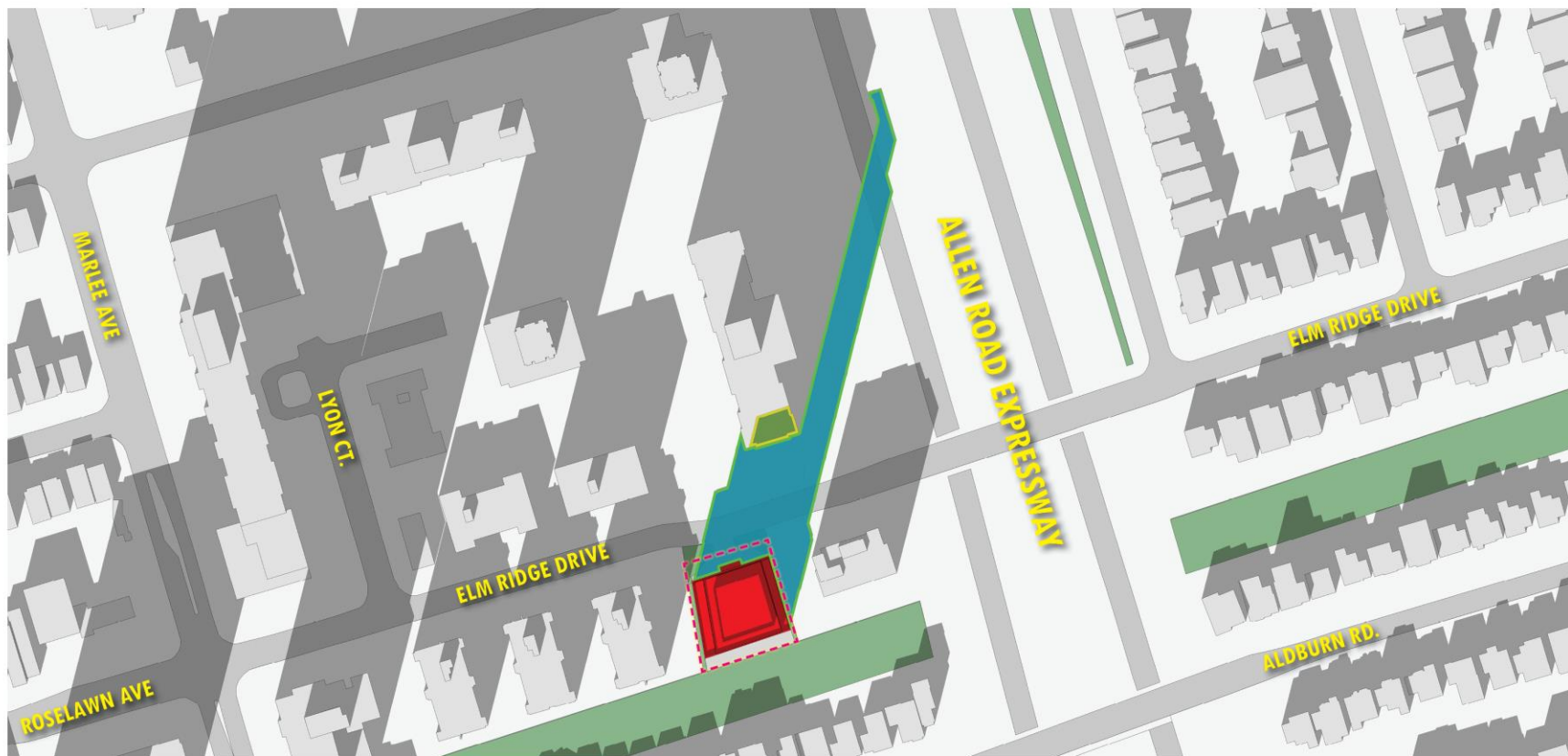
- ADDITIONAL SHADOW ON GROUND
- ADDITIONAL SHADOW ON ROOFS
- SITE BOUNDARY

DECEMBER 21, 12:18 PM

SUN / SHADOW STUDY

155 ELM RIDGE, TORONTO, CITY OF TORONTO





RICHMOND | Architects Ltd.

55 EGLINTON AVENUE EAST
SUITE 802
TORONTO, ON M4P 1G8

T. 416 961 1567

RICHMONDARCH.COM

- ADDITIONAL SHADOW ON GROUND
- ADDITIONAL SHADOW ON ROOFS
- SITE BOUNDARY

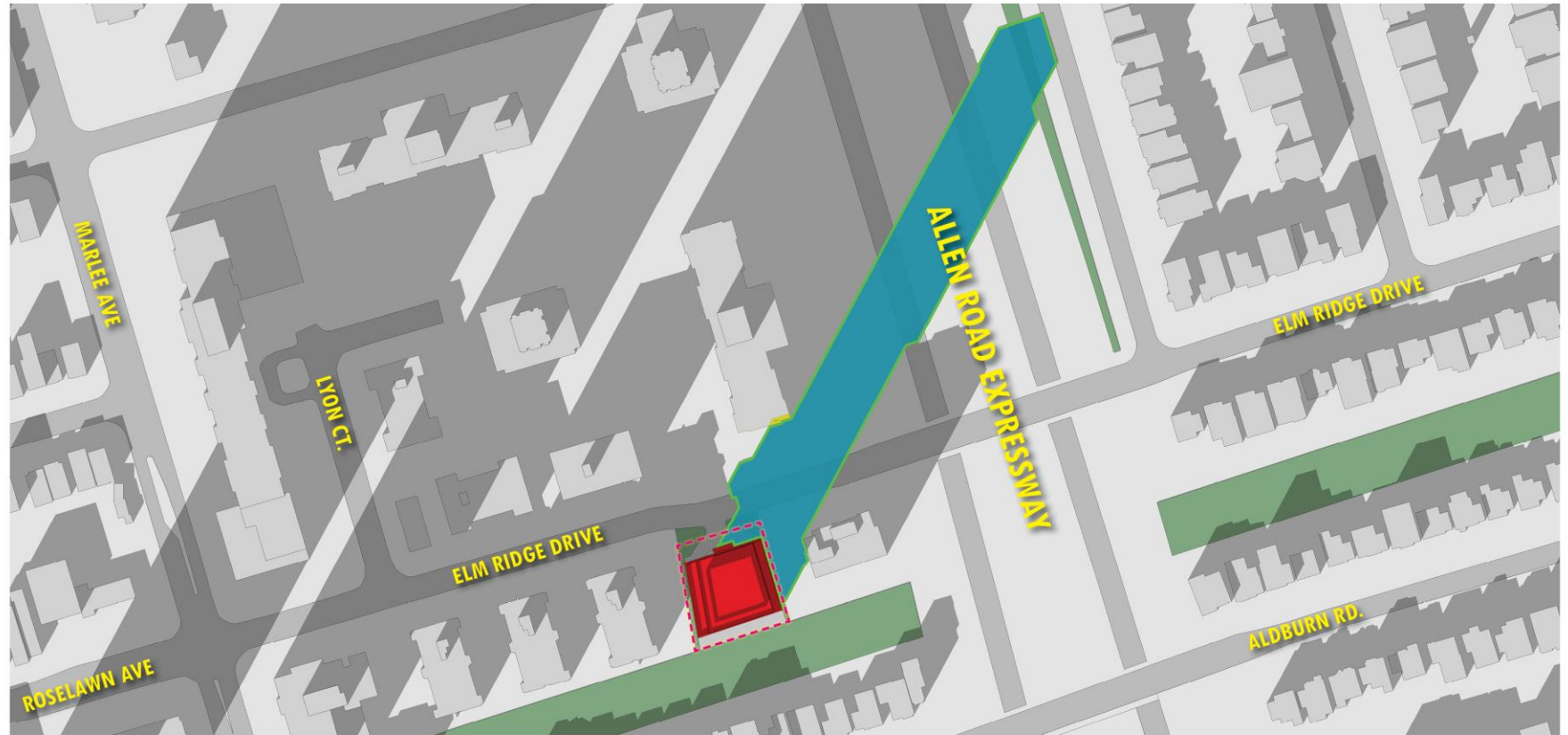
DECEMBER 21, 1:18 PM

SUN / SHADOW STUDY



37

155 ELM RIDGE, TORONTO, CITY OF TORONTO



RICHMOND Architects Ltd.

55 EGLINTON AVENUE EAST
SUITE 802
TORONTO, ON M4P 1G8

T: 416 961 1567

RICHMONDARCH.COM

- ADDITIONAL SHADOW ON GROUND
- ADDITIONAL SHADOW ON ROOFS
- SITE BOUNDARY

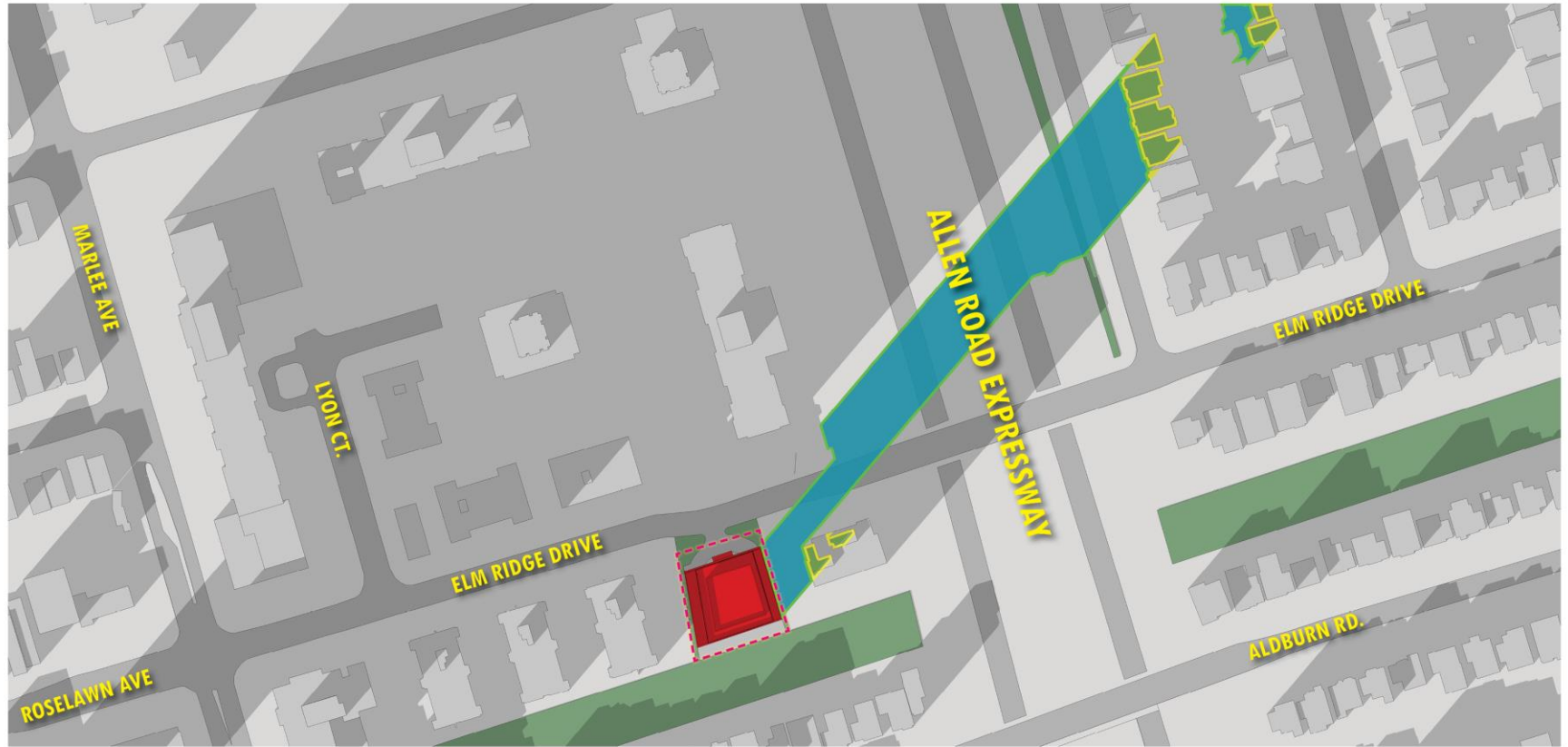
DECEMBER 21, 2:18 PM

SUN / SHADOW STUDY



38

155 ELM RIDGE, TORONTO, CITY OF TORONTO



RICHMOND | Architects Ltd.

55 EGLINTON AVENUE EAST
SUITE 802
TORONTO, ON M4P 1G8

T: 416 961 1567

RICHMONDARCH.COM

- ADDITIONAL SHADOW ON GROUND
- ADDITIONAL SHADOW ON ROOFS
- SITE BOUNDARY

DECEMBER 21, 3:18 PM

SUN / SHADOW STUDY





RICHMOND | Architects Ltd.

65 EGLINTON AVENUE EAST
SUITE 802
TORONTO, ON M4P 1G8

T: 416 961 1567
RICHMONDARCH.COM

- ADDITIONAL SHADOW ON GROUND
- ADDITIONAL SHADOW ON ROOFS
- SITE BOUNDARY

DECEMBER 21, 4:18 PM

SUN / SHADOW STUDY



40

155 ELM RIDGE, TORONTO, CITY OF TORONTO